

RESILIENTPOWER

A project of CleanEnergyGroup



Implementing Community Programs Alongside Resilience Hub Development



April 25, 2023

WEBINAR LOGISTICS



Join audio:

- Choose Mic & Speakers to use VoIP
- Choose Telephone and dial using the information provided

Use the orange arrow to open and close your control panel

Submit questions and comments via the Questions panel

This webinar is being recorded. We will email you a webinar recording within 48 hours. CEG's webinars are archived at www.cleangroup.org/webinars

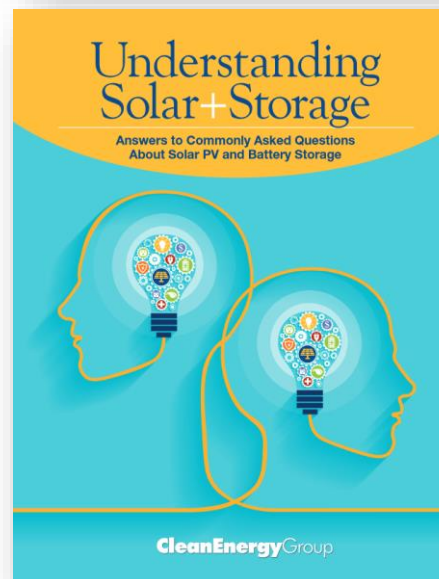
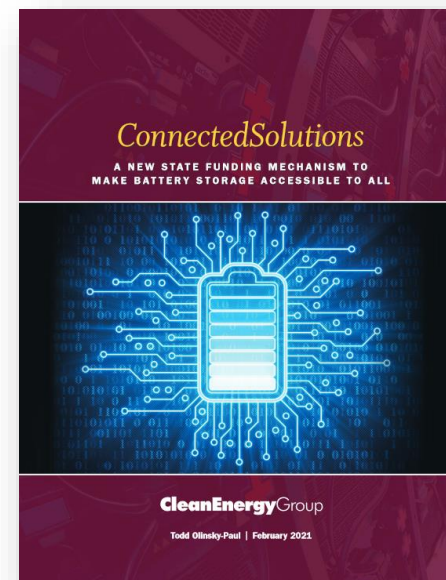
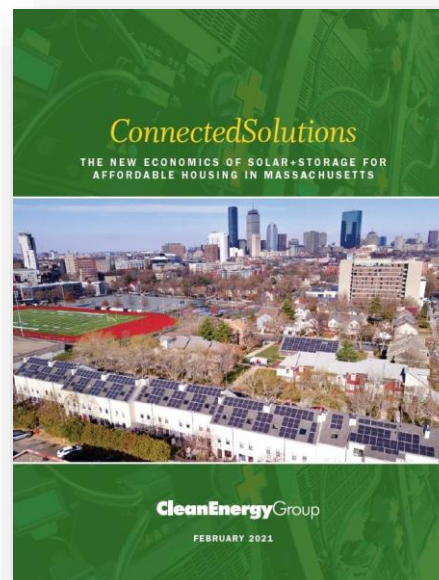


Clean Energy Group (CEG) works at the forefront of clean energy innovation to accelerate an equitable and inclusive transition to a resilient, sustainable, clean energy future.

Visit www.cleangroup.org to learn more about our current initiatives, recent publications, and upcoming events.

THE RESILIENT POWER PROJECT

- Increase public/private investment in clean, resilient power systems (solar+storage)
- Protect low-income and vulnerable communities, with a focus on affordable housing and critical public facilities
- Engage city, state and federal policy makers to develop supportive policies and programs
- Visit www.resilient-power.org for more information and resources



SUPPORTING 250+ PROJECTS ACROSS THE COUNTRY



WEBINAR SPEAKERS



Dr. Estelle-Marie Montgomery
FH Faunteroy Center



Queen Zakia Shabazz
Virginia Environmental Justice
Collaborative (VEJC), United
Parents Against Lead (UPAL)



Marriele Mango
Clean Energy Group



Thank you for attending our webinar

Marriele Mango

Project Director

Clean Energy Group

marriele@cleanegroup.org

Find us online:

www.resilient-power.org

www.cleanegroup.org

www.facebook.com/clean.energy.group

@cleanenergygrp on Twitter



Upcoming Webinars



- Progress Towards 100% Clean Energy: A State Leaders Roundtable (4/26)
- The Department of Defense's Clean Energy and Energy Resilience Programs and Policies (5/2)
- Building a Resilient Workforce: The Detroit Clean Energy Contractor Accelerator Program (5/3)

Read more and register at www.cleanegroup.org/webinars

RESILIENTPOWER

A project of CleanEnergyGroup



Resilient Power Leadership Initiative & Technical Assistance Fund



April 25, 2023

RESILIENT POWER TECHNICAL ASSISTANCE FUND

Providing technical support to build local resilience



Provided over **\$1 million in funding** for communities to evaluate resilient solar+storage at essential community-serving facilities.



Advanced local energy resilience capacity and knowledge building with more than **100 community-based organizations across 27 states**, the District of Columbia, and Puerto Rico, as well as Tribal Governments.



Assisted with the deployment of **over 40 solar+storage installations** delivering reliable backup power and energy savings, with more projects working towards completion every day.

DONATE or APPLY:

www.cleangroup.org/initiatives/technical-assistance-fund

“With our Technical Assistance Fund grant, our small grassroots non-profit was able to hire a local consultant to work with us on finding a low-budget solar+storage system for our small food hub in a rural community highly impacted by Hurricane María.”

*Tara Rodriguez Besosa
Co-founder of El Departamento de la Comida, TAF Awardee 2019*

Clean Energy Group Technical Assistance Fund

- Supports the development of clean energy projects aimed at decreasing energy burdens and increasing resiliency
- Funds preliminary technical and financial feasibility analyses to help determine size, cost, and benefits of solar, battery storage and other resilient energy technologies
- Grants range from \$5,000 - \$15,000 depending on scope of project
- Prioritizes projects serving low-income populations or Black, Indigenous, and People of Color (BIPOC) communities
- Low barrier to entry

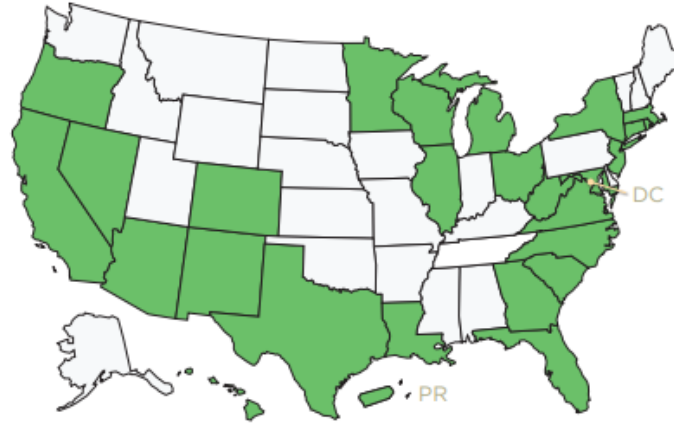


TECHNICAL ASSISTANCE FUND IMPACTS, 2013 - 2022

**\$1.3 million
in Grant Awards**



**28 States
and Territories**



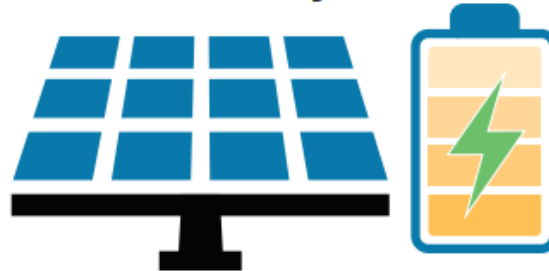
**Over 100 Community
Service Partners**



**3,000 Affordable
Housing Units**



**44 Completed
Projects**



**255
Community Facilities**



RESILIENT POWER LEADERSHIP INITIATIVE

Building resilient power capacity locally



Provided almost **\$200,000 in funding** to community based-organizations to increase internal capacity by enabling them to devote more time to learning about resilient power technologies, policies, and issues.



"The RPLI provides extra support for Feed The Second Line leadership to continue the work of being on the frontlines- in efforts to continue to support the communities in our city in the aftermath of a natural disaster through our Get Lit Stay Lit program."

*Tinice "Tee" Williams, Executive Director
Feed The Second Line, New Orleans, LA
RPLI Awardee 2023*

LEARN MORE:

<https://www.cleangroup.org/initiatives/resilient-power-leadership-initiative/>

Clean Energy Group Resilient Power Leadership Initiative

- Goal: Seed long-term, community-led programs that further advance energy equity and environmental justice.
- CEG one-on-one support throughout
- Low barrier to entry
- Minimal reporting requirements
- Grants are \$10,000 for one year
- Average of 2 – 3 awards per year
- Prioritizes organizations serving low-income populations or Black, Indigenous, and People of Color (BIPOC) communities



Marriele Mango
Project Director
Clean Energy Group
marriele@cleanegroup.org

Find us online:
www.resilient-power.org
www.cleanegroup.org
www.facebook.com/clean.energy.group
@cleanenergygrp on Twitter



**F. H. FAUNTEROY COMMUNITY
ENRICHMENT CENTER**

**FH FAUNTEROY COMMUNITY
ENRICHMENT CENTER**

& the implementation of the

**RESILIENCE INCUBATOR
@FH FAUNTEROY**

Dr. Estelle-Marie Montgomery, Executive Director

April 25, 2023

WHO WE ARE

- The Rockson Community Development Corporation (RCDC) is a 501(c)(3) Organization, DBA FH Faunteroy Community Enrichment Center (FCEC) established in 2013 to serve the Deanwood community directly and when possible, expand its support further into Ward 7.
- The FCEC is located on the ground level of a mixed-use development with 100% affordable apartments for 70 families.
- The FCEC has a strong track record of providing programs and services for all Ward 7 residents including:
 - Youth (Ages 7-24)
 - Adults (From age 25)
 - Senior (Above 60)



OUR WORK

PURPOSE

To serve and build trust with the community and build community capacity.

Just as important, it serves as a safe haven for many of our youth, while providing them high-quality programming with social/emotional components infused in every program.

VISION

Build capacity through intergenerational resilience and opportunities for sustainability.

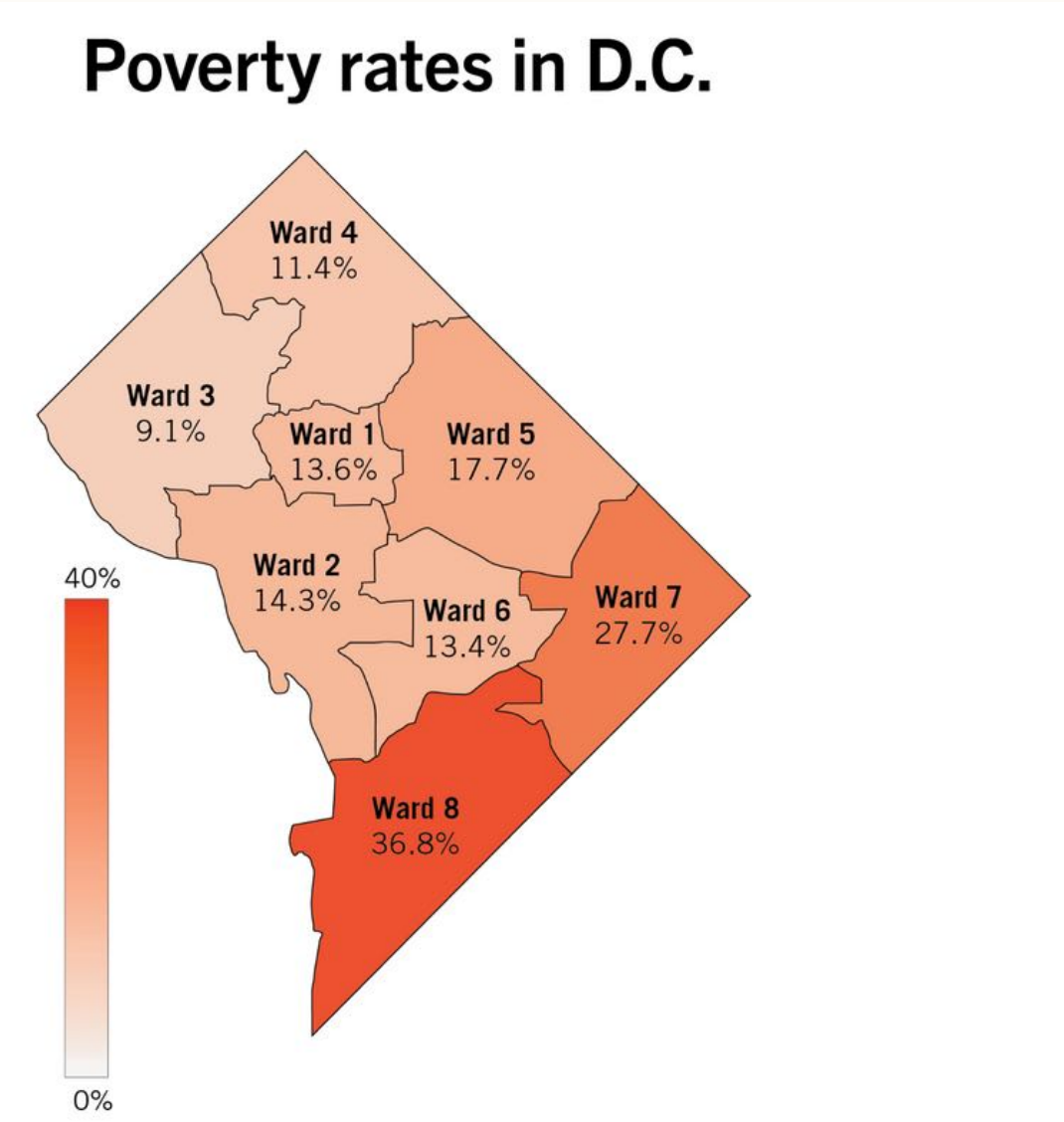
MISSION

Support community self-determination at a intergenerational level by providing consistent, high-quality programming embedded in environmental stewardship and opportunities for enrichment, education (literacy), and exposure to enable resiliency and sustained outcomes.

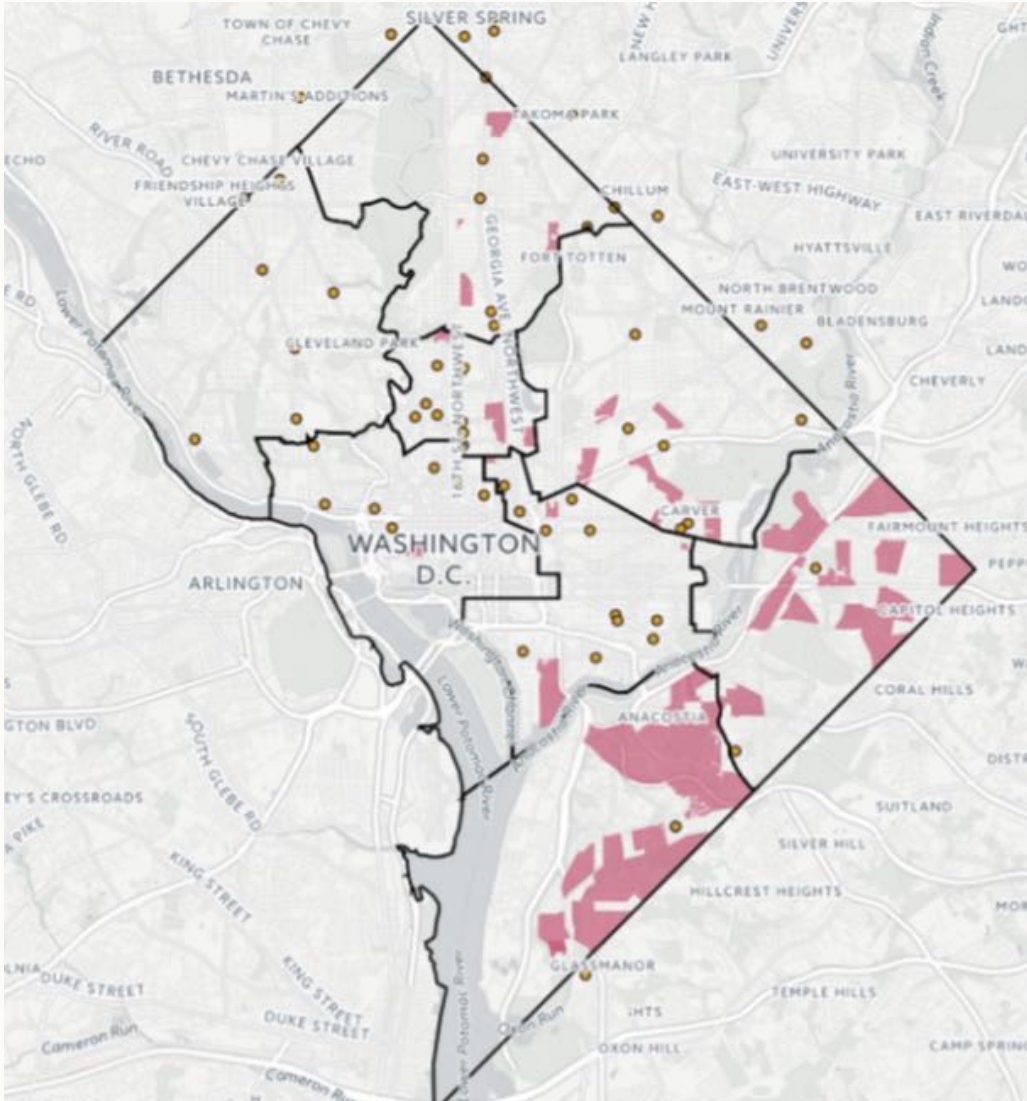
We provide opportunities for an underexposed, underserved and underrepresented population in the District of Columbia.

CURRENT COMMUNITY CHALLENGES

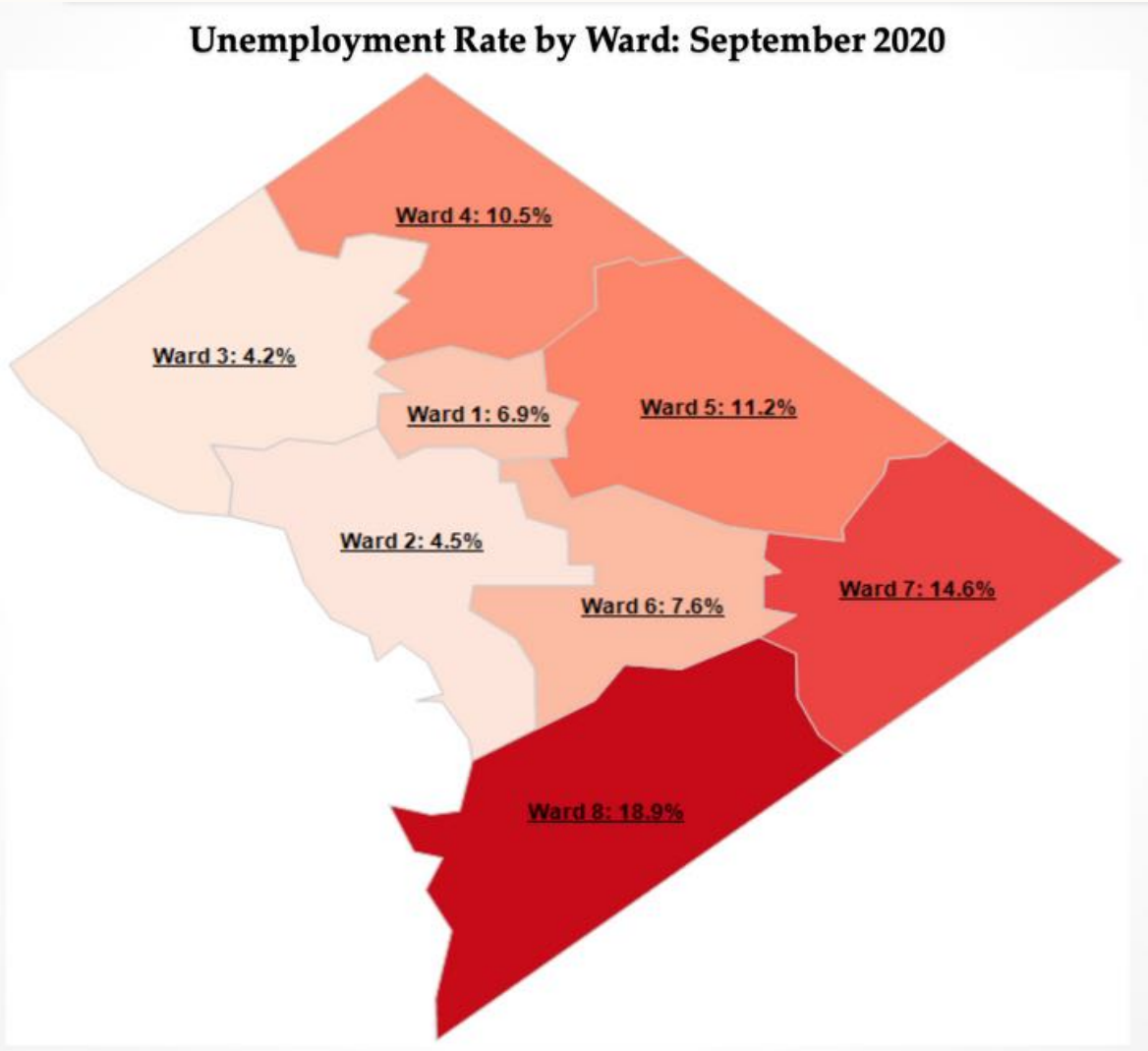
- 91.49% of the population is African American (DC Health Matters, 2022)
- The District of Columbia has the highest unemployment rate at 6.53% (DC Health Matters, 2022)
- In Ward 7:
 - The unemployment rate is 14.76%
 - The average income rate for African Americans is \$46,718
 - The average income rate for White Americans is \$141,729



<https://www.gwhatchet.com/2019/03/04/ward-2-boasts-high-household-income-education-rates/>



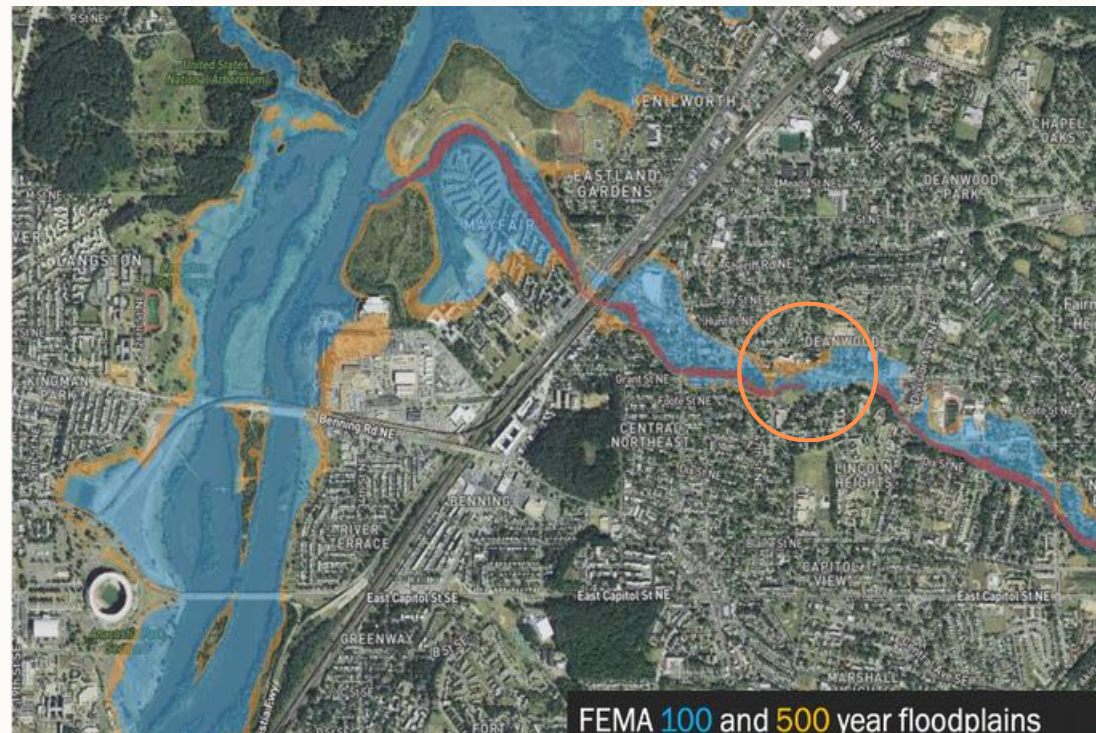
<http://food-deserts.com/food-deserts-in-washington-dc/#:~:text=Half%20of%20the%20food%20deserts%20in%20D.C.%20are%20located%20in,lowest%20incomes%20in%20the%20city.>



https://does.dc.gov/sites/default/files/dc/sites/does/page_content/attachments/DC%20Labor%20Market%20Indicators_September2020.pdf

SOLVING FOR CHALLENGES VIA COLLECTIVE ACTION

- The importance of readiness has become even more vital and crucial to urgently implement as we watched the socio-economic and health impact of the COVID19 pandemic make the normative patterns of community stressors more evident, which spiked to dangerous levels putting an already vulnerable community into further despair.
- Social determinants of health are the most significant drivers of differences in health outcomes (i.e., health disparities) and health inequities in neighborhoods and communities: Areas with poor social determinants indicators typically have the worst health outcomes
- By using a **multidisciplinary approach**, we can create opportunities for **communities to actively participate** in environmental strategies such as sustainability, conservation, and risk reduction.



<https://doee.dc.gov/floodplainmap>



White flags are seen on the National Mall near the Washington Monument in Washington, DC on September 19, 2021. - The project, by artist Suzanne Brennan Firstenberg, uses over 600,000 miniature white flags to symbolize the lives lost to Covid-19 in the US.



<https://www.washingtoninformer.com/exploring-black-homeownership-in-d-c-s-ward-7-and-8/>

SHAPING A COMMUNITY LED INITIATIVE

- The collaborative efforts established by African American pioneers in the 1960's to develop a self-sufficient environment, now welcomes the intersectionality of self-sufficiency with intergenerational sustainability.
- In 2018, DOEE convened The Equity Advisory Group (EAG) to develop a set of recommendations on how to implement the District's climate plans in Ward 7 neighborhoods along the Watts Branch tributary of the Anacostia River. The EAG transformed into the Ward 7 Resilience Hub Community Committee
In 2019, the COVID-19 pandemic swept into Ward 7 illuminating vulnerabilities and further displacing the community.



WHAT DOES RESILIENCE MEAN

“Resilience is the ability of people and their communities to anticipate, accommodate and positively adapt to or thrive amidst changing climate conditions and hazard events. Resilient communities enjoy a high quality of life, reliable systems, and economic vitality, and they conserve resources for present and future generations. The term resilience is often used interchangeably with emergency preparedness and response, but these elements only address part of this important concept.”

— US Directors Network (USDN) Guide to Developing Resilience Hubs (2019)

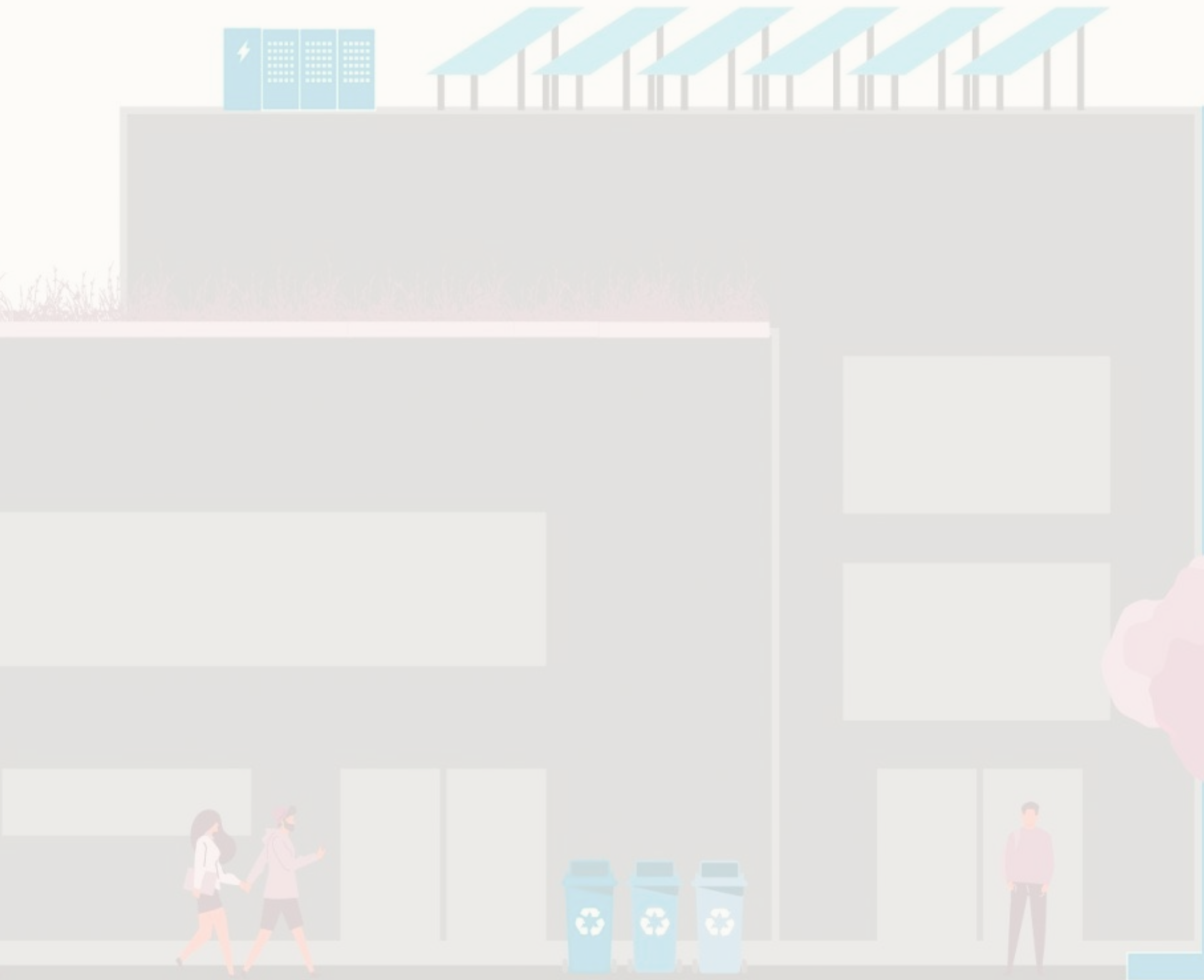


FROM IDEAS TO ACTIONS

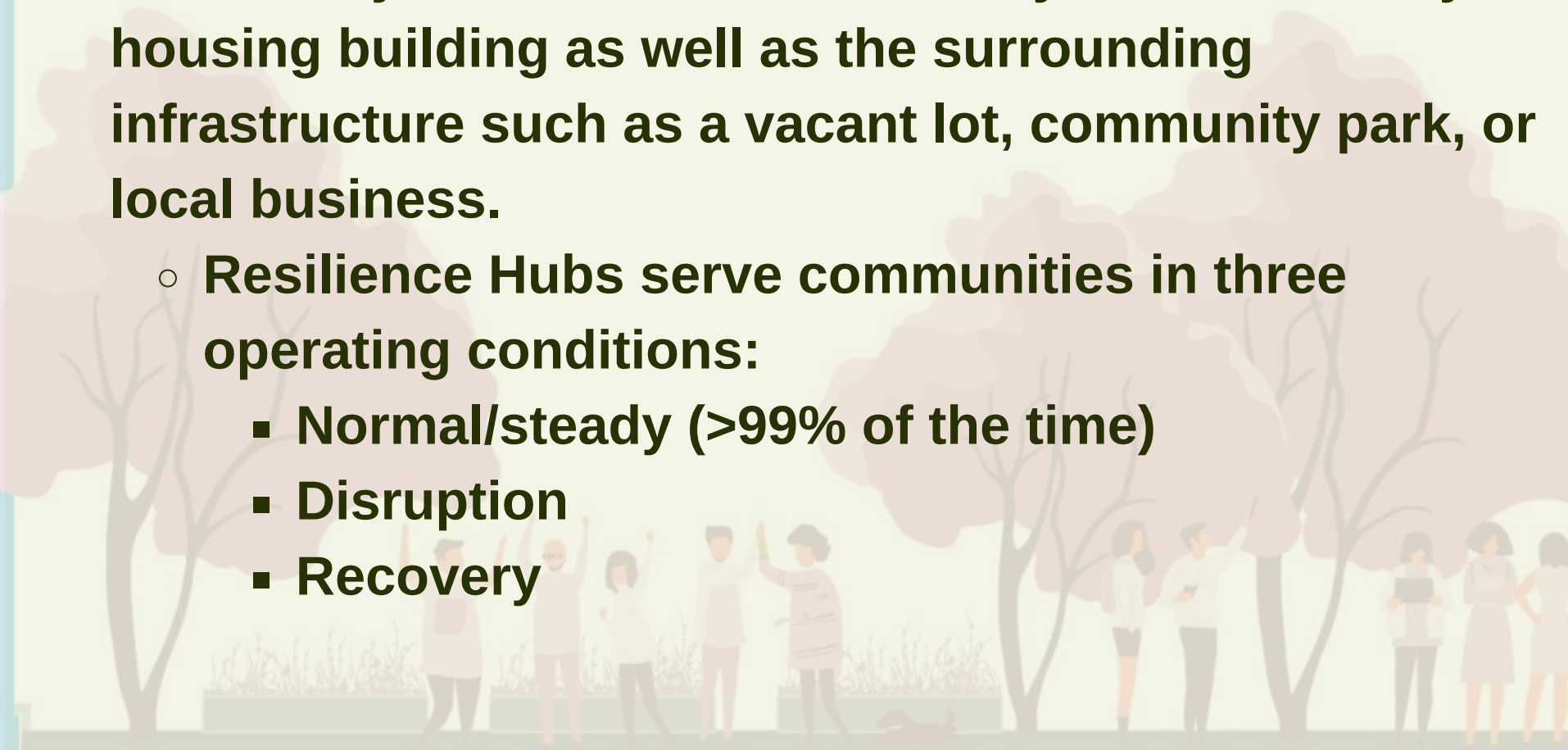
- At the height of the pandemic, which proved the urgency for resilience hubs, the FCEC was selected by the Ward 7 Resilience Hub Community Committee (RHCC), in coordination with Department of Environment and Energy (DOEE), to transform into the first, and pilot, Resilience Hub in Ward 7.
- The resilience hub will respond to present community stressors (focused on human outcomes not only managing hazards) such as
 - Food access
 - Public safety
 - Flooding
 - Unemployment/poverty
 - Resource allocation
 - Mental health
 - Access to information



RESILIENCE HUBS, WHAT ARE THEY?



- Resilience Hubs are community-serving facilities augmented to support residents, coordinate communication, distribute resources, and reduce carbon pollution while enhancing quality of life.
- Hubs can meet a myriad of physical and social goals by utilizing a trusted physical space such as a community center, recreation facility, or multi-family housing building as well as the surrounding infrastructure such as a vacant lot, community park, or local business.
 - Resilience Hubs serve communities in three operating conditions:
 - Normal/steady (>99% of the time)
 - Disruption
 - Recovery



5 RESILIENCE FUNCTIONS OF A HUB

Space to meet regular programming goals but built/enhanced to withstand extreme weather and accommodate extra demand.

STRUCTURE

On-site personnel to support programming and during disruption enhanced personnel, augmented by volunteers and suppliers to respond to demand and emergency supplies needed.

OPERATION

During steady state it receives energy from the grid but during disruption it must become an island with back-up power that is supplemented perhaps by generator.

POWER

During steady state continue to build community trust in communication so that during disruption it facilitates emergency communications through trusted community channels; partners with government to ensure consistent messaging.

COMMUNICATION

In steady-state promote community preparedness, resident well-being and trust building. During a disruption, programming transitions to meet community needs including refrigeration, charging, information, communication etc.

PROGRAMMING

PRINCIPLES FOR WARD 7 RESILIENCE HUB

1.

- Be strategically located in Far Northeast Ward 7 in physical spaces that are: trusted and recognized by the community they serve

2.

- Offer resources during a disaster
 - Power
 - Information
 - Essential provisions
- Provide natural gathering places to meet community needs during non-emergency situations.

3.

- Uplift the community by leveraging sustainable funding to hire and train residents by building on existing community resources and partnering with established leaders.

Levels of Resilience Hubs

BASE

Sites meet the minimum criteria for being a Resilience Hub across all three resilience modes including:

- Strong community support and leadership
- A site that is well-trusted
- A building or set of buildings
- Resilient energy systems
- Resilient communications systems
- Base programming and services co-developed with community

OPTIMAL

Site meets all the minimum criteria set for the Base Hub but will also incorporate a range of expanded services and resilience-enhancing retrofits. Illustrate components include:

- Water capture and filtration onsite
- Air filtration
- Solar with battery backup
- Community gardens

IDEAL

Ideally Resilience Hubs will have (and meet) ambitious goals that provide community benefits year-round.

Illustrative ambitious goals, co-developed with community members and partners, include:

- Greywater reuses onsite
- Biophilic design standards
- Net zero energy
- Having community solar benefits for the surrounding community.

FCEC's Goal: Implementing an 'IDEAL' Resilience Incubator

WHY THE FH FAUNTEROY COMMUNITY CENTER IS AN IDEAL PILOT LOCATION

- The FCEC offers many important services for a hub including:
 - Ability to install solar & battery backup
 - Residents living on site could open the building as needed flexible hours
 - Located in area with resilience needs, based on climate, health, and economic risk assessment
 - Accessible by transit
 - Ability to grow organizationally through capacity building
 - Ability to expand the current physical space
 - Community gather spaces (conference rooms and business center)
 - Staff has already established relationships with partners and community
 - Property owner invested in hub concept

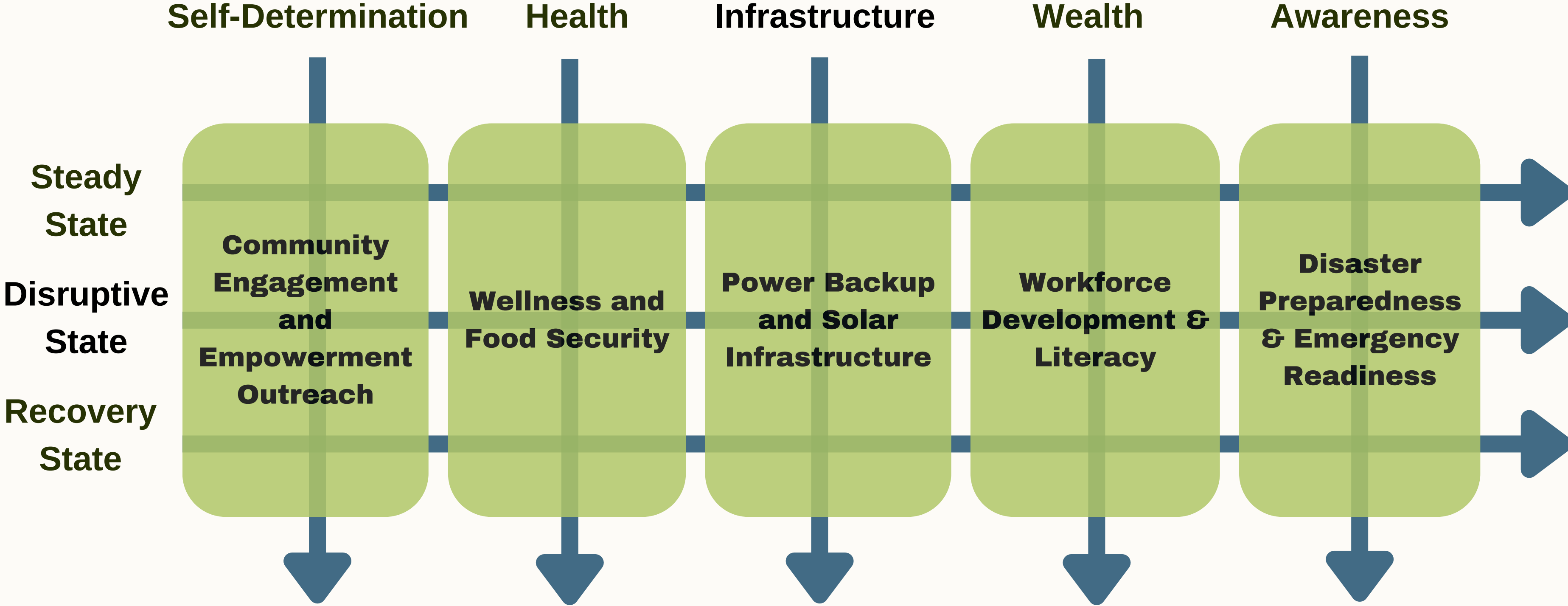
ALIGNING WITH CLIMATE READY DC

“Portions of the Far Northeast and Southeast Planning Area have also been identified as a priority area for resilience planning, given the vulnerabilities to climate change and flood risk as identified in the Climate Ready DC Plan published in 2016. In particular, the area around the Watts Branch, a tributary to the Anacostia River, is currently at risk of flooding and projected to be at increased risk in the years ahead. This area has a significant concentration of community resources for those at risk, such as medical services and affordable housing which both serve vulnerable populations.”



CLIMATE
READY DC

PILOT RESILIENCE HUB: FOCUS AREAS



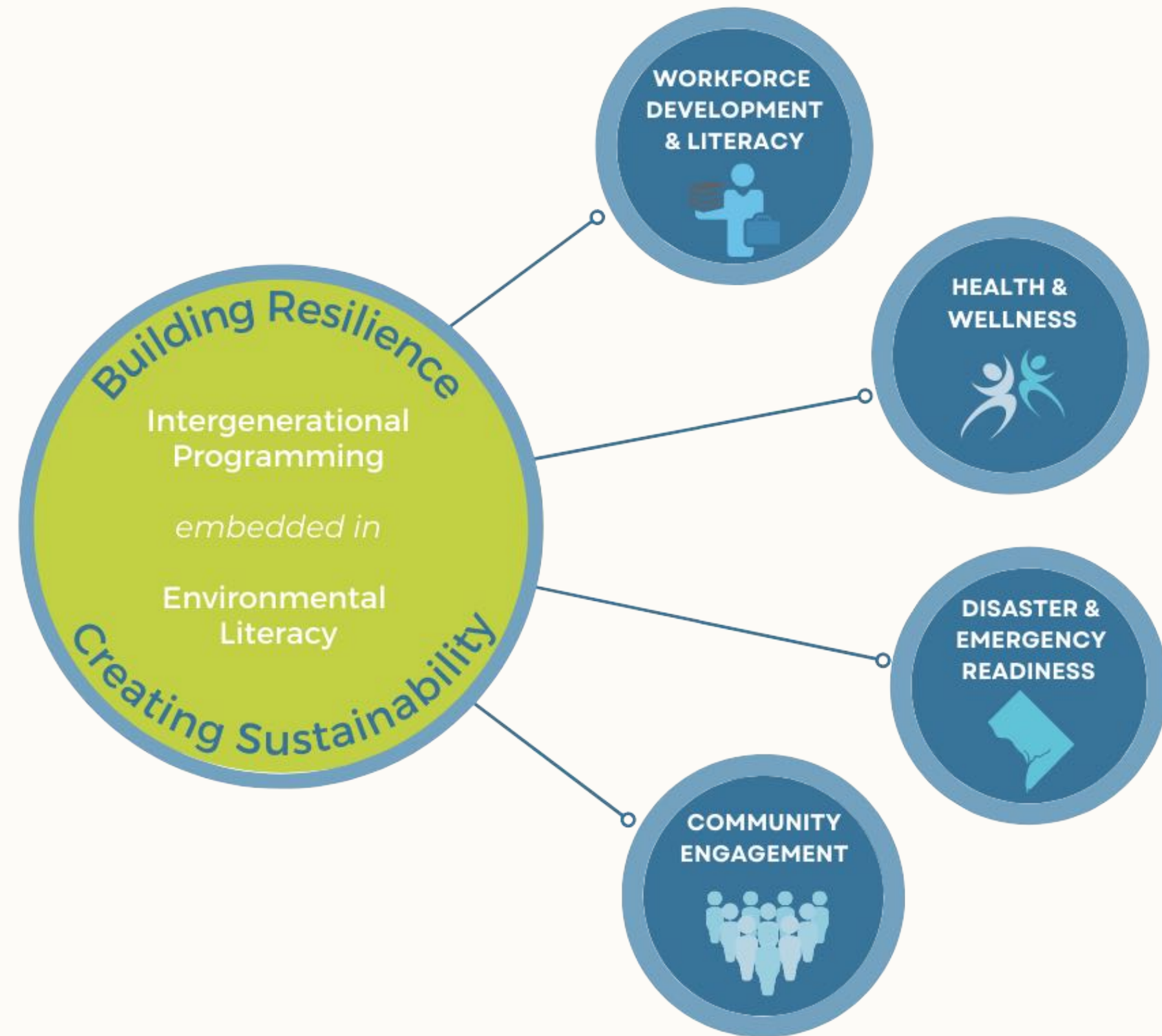
PILOT RESILIENCE HUB: STRATEGY

Resilience hubs play an important role in dis-advantaged communities by enabling capacity building, readiness to handle disruptions, and provide ongoing resources.

Building on its history, community trust, and ambitions, the **Resilience Incubator @ FH Faunteroy** is being established on the principals of equity, inclusion, and justice focused on building intergenerational resilience and creating sustainability in collaboration with community members, government, and the public & private sectors.

Programs and services are grounded in workforce development & literacy, health & wellness, preparedness & readiness, community engagement, and environmental literacy.

The location at 4800 Nannie Helen Burroughs Ave NE, will transform to become an innovative, sustainably designed community engagement center and ***Ideal*** resilience hub equipped with solar and battery backup to provide seamless programming and resources in steady, disruptive and recovery states.

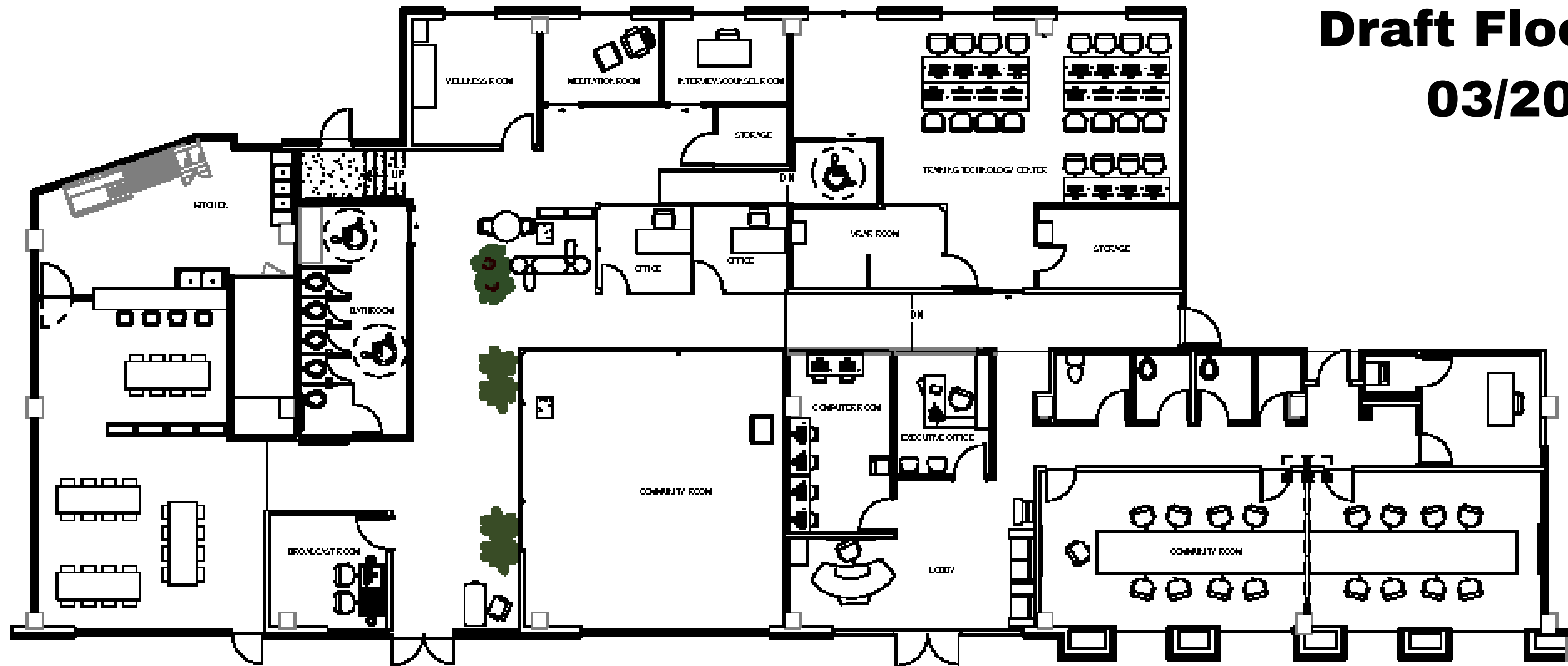


RESILIENCE INCUBATOR@FH FAUNTEROY

The FCEC serves as a community asset, centered around a network of supportive service providers in order to meet present diverse community needs. The creation of the Resilience Incubator @ FH Faunteroy involves:

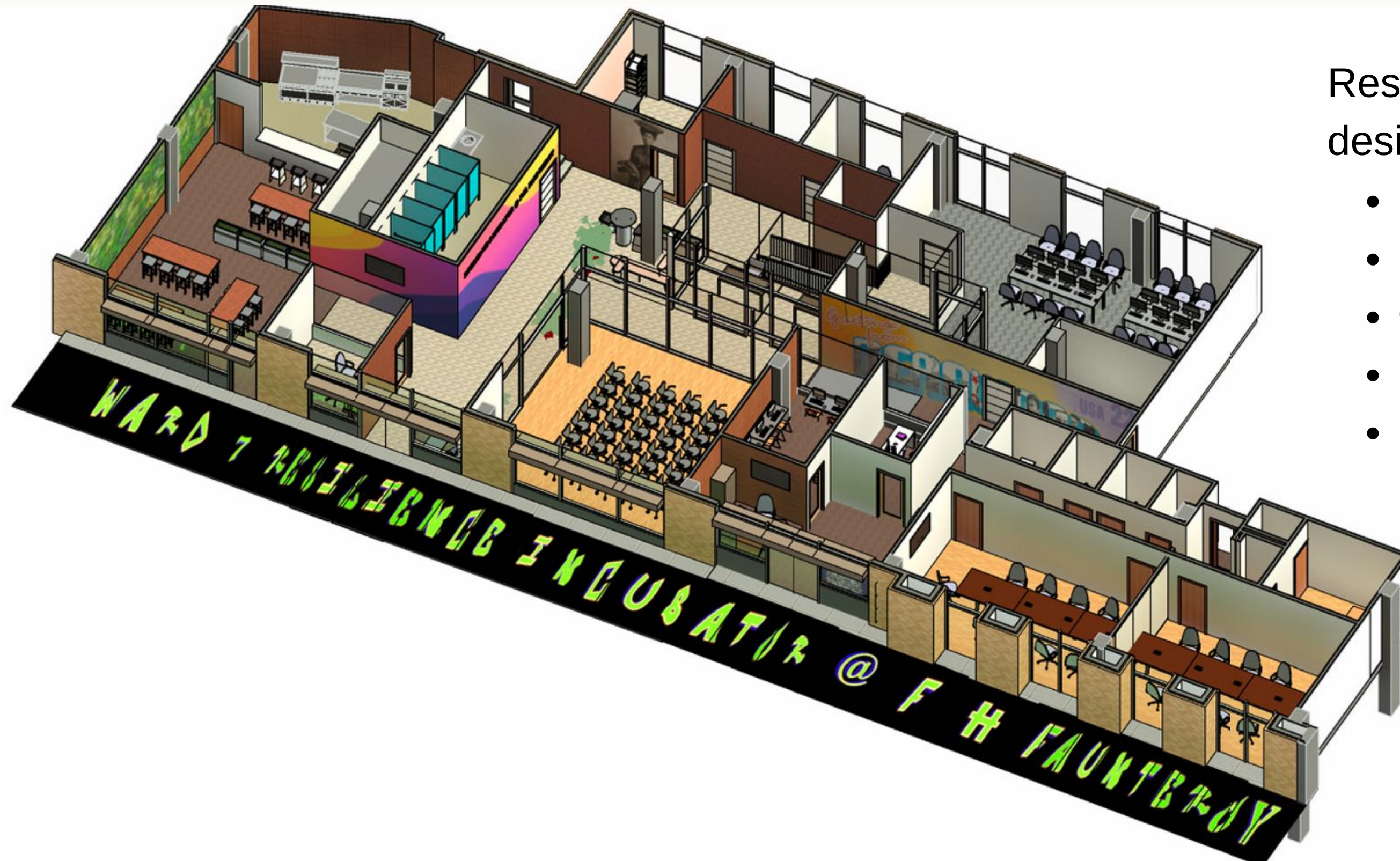
- Installation of rooftop solar and a battery back-up system
- Historic Murals in lobby and hallways
- Renovation and Build out of approx. 6,000 sq. ft on the ground floor consisting of:
 - **Multipurpose rooms**
 - **Cafe/Seminar Green Space**
 - **Health & Wellness & Quiet Room**
 - **Technology Center (Computing/AR/VR)**
 - **Broadcasting Studio (video/Voice)**
 - **Commerical kitchen**
 - **Interview/coaching room**
 - **Makers Studio**

FIRST OF ITS KIND RESILIENCE HUB IN DC RESILIENCE INCUBATOR @ FH FAUNTEROY



Draft Floor Plan
03/2023

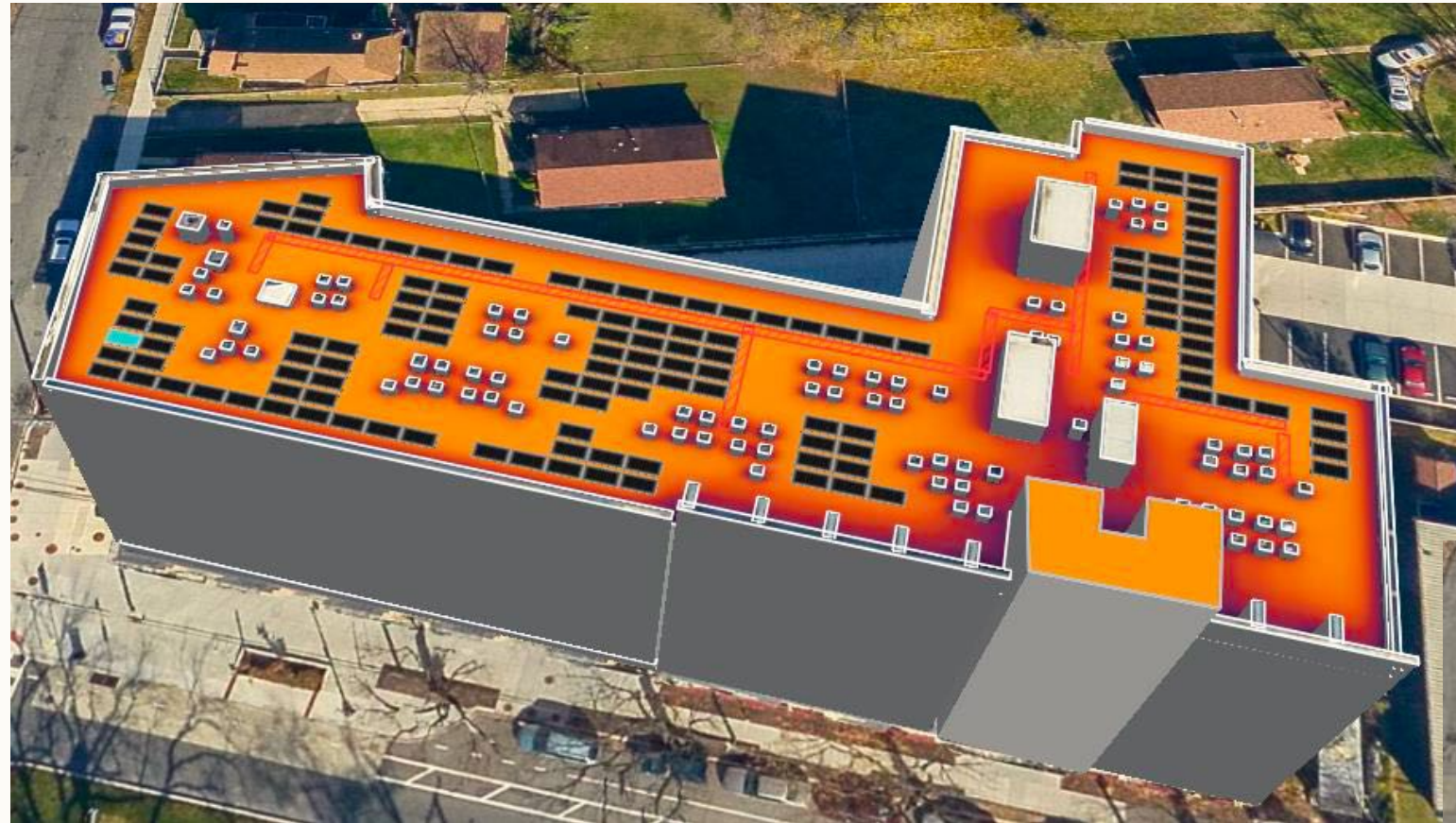
FIRST OF ITS KIND RESILIENCE HUB IN DC RESILIENCE INCUBATOR @ FH FAUNTEROY



Resilience and Sustainable design such as:

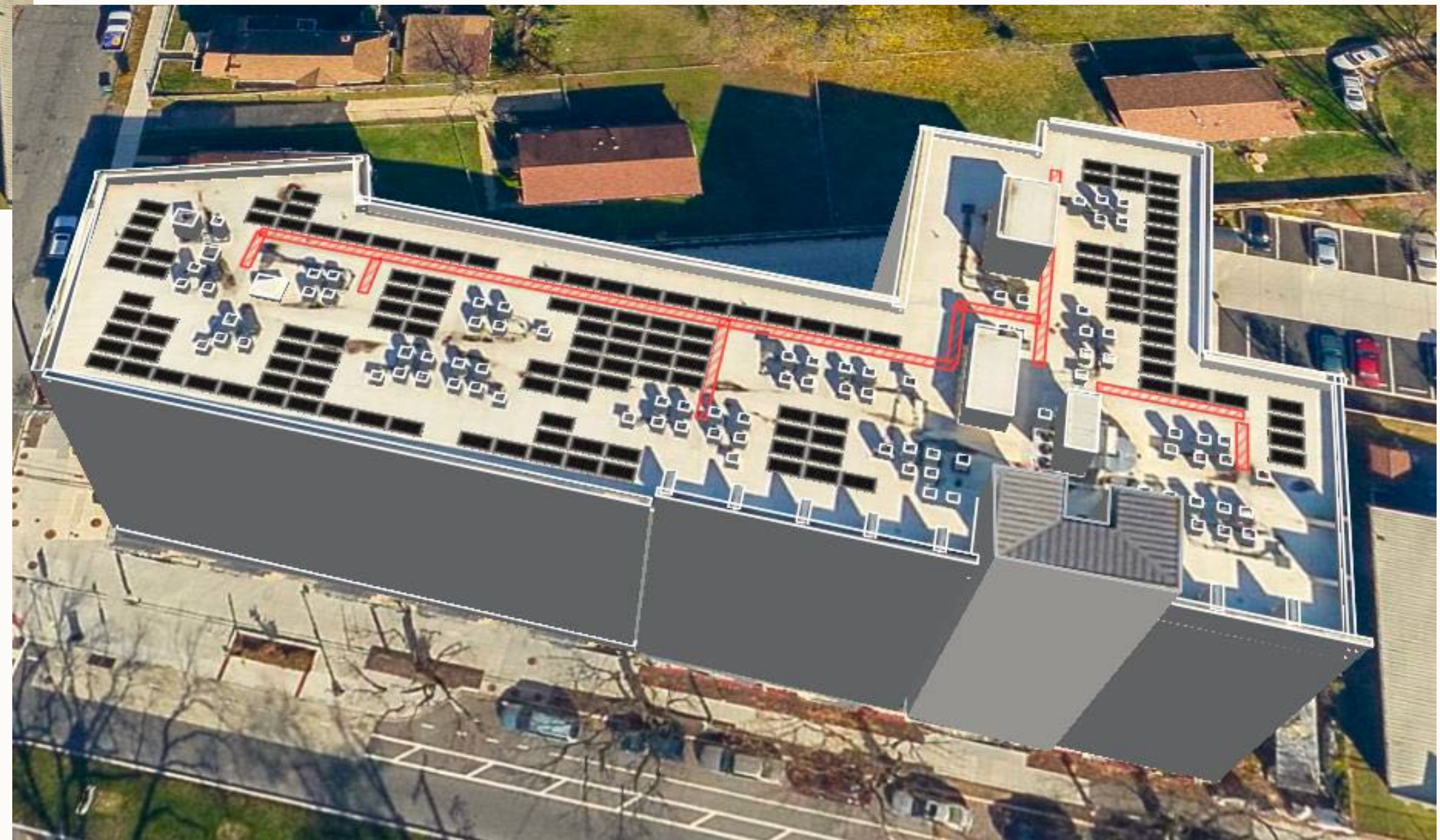
- Rooftop Solar
- Battery Backup
- Greywater reuse
- Biophilic design standards
- Rain water capture

SOLAR DESIGN & BATTERY BACKUP



DRAFT RENDERING

*FOR DISCUSSION
PURPOSES ONLY*



Partnering for Resilient Communities

Queen Zakia Shabazz Presents
the

Petersburg, VA Community Resiliency Hub

25 April 2023
Clean Energy Group Resilient Power Project

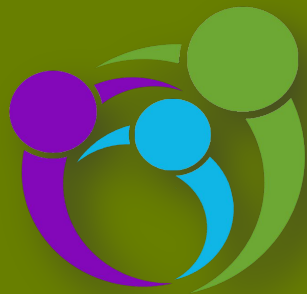
UPAL's Solar Powered Community Resiliency Hub

a

Joint Venture of

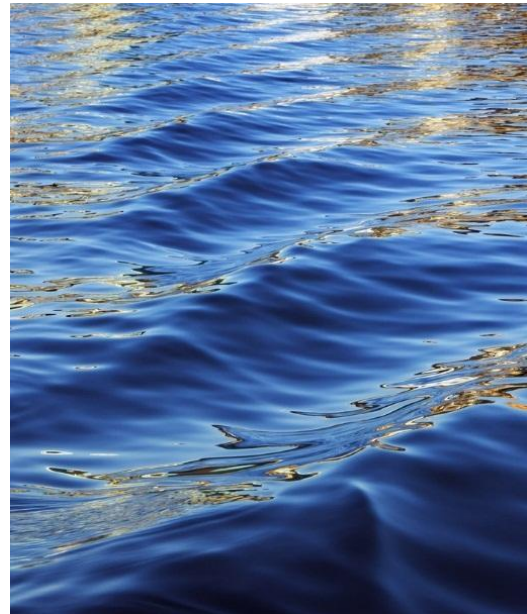
United Parents Against Lead (UPAL) and
Virginia Environmental Justice
Collaborative (VEJC)





United Parents Against Lead & Other Environmental Hazards - UPAL National

Ensuring the fundamental rights of all children
to live in a safe and healthy environment



-
- UPAL was founded in 1996 as a result of learning that my son had been poisoned by lead.
 - UPAL Chapters all led by parents of Lead Poisoned Children.
 - Implemented a \$2,000,000 Housing and Urban Development (HUD) Lead Elimination Action Project 2004 - 2007
 - Member of the Lead Service Line Replacement Collaborative
 - Declared April - Lead Awareness Month
-

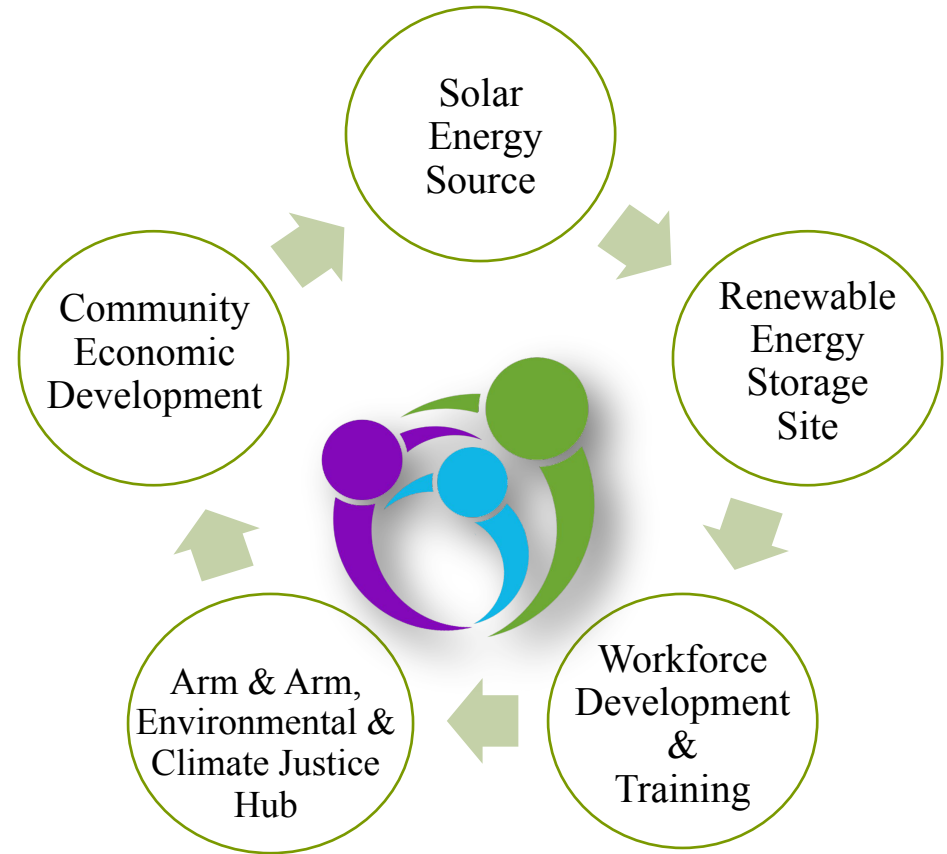
April is Lead Awareness Month

- Partnering for a Resilient Petersburg - Creation of Solar-Powered Community Resiliency Hub
- Arm in Arm Hub Virginia Headquarters - Centering Racial and Economic Justice to End the Climate Crisis through Disruptive Humanitarianism
- EJ Youth Academy - Launched in April with Fahodi Shule
- Lead Service Line Replacement Project - Prevent Another Flint with 1619 Inc.
- Electrification - Promoting Equity in Transportation and Building Electrification
- Providing Lead Dust Busters Kits to Families
- Advocate for the Release of Sergio Gray - a lead poisoned youth with an unjust prison sentence
- Walk UPAL's Garden Labyrinth for Health and Wellness - Dedication May 6 2023 - World Labyrinth Day

Support UPAL's Efforts to Eradicate Lead Poisoning - Your Tax Deductible contribution supports the above efforts

Dedicated to ensuring the fundamental rights of all children to live in a safe and healthy environment. A national networking organization committed to ending the threat of lead poisoning and other environmental hazards. As an organization, our goals are the following:

1. Increased energy resiliency, security and democracy through the Petersburg Solar-Powered Community Resiliency Hub
2. Increased parity in clean energy technology including solar plus storage
3. Decreased energy burdens and increased clean energy strategies in divested communities
4. Prioritize accessible training, education and community economic development with the creation of a clean energy job pipeline through green jobs training and certification
5. Replicable access and adaptation to energy security in LMI and HEDC communities.



Virginia Environmental Justice Collaborative

- Founded in 2015 (SE Care Coalition, NVM, WeAct, App Voices)
- I began serving as Coordinator in 2018 - 18 Member Organizations
- Have grown to 45 Member organizations under my direction
- Became CEO in 2021

Successes of the VEJC

- Created the VA EJ Council - later codified and included in the state budget
- Collaborated to halt the Atlantic Coast Pipeline - MVP Next
- Drafted the VA EJ Act of 2020 - Passed as law in VA
- Facilitated the creation of the Inter-Agency Work Group to make sure that all state agencies have an environmental justice lens

Virginia Environmental Justice Map

- Created VA EJ Map to Highlight EJ Communities

[Virginia Environmental Justice Collaborative Map](#)

1. Features 1st Person Community Narratives
2. Sites Potential Locations to Create Resiliency Hubs using Petersburg as a model
3. To add LSLs and Landfills

Resiliency Hub?

- In early 2018 UPAL partners began having talks about Resiliency Hubs - VA not solar friendly
- November 30th 2018 one of 4 celebrated at the Leaders in Energy Four Generations Awards ceremony (Baby Boomer)
- Met Katherine Morua of Morua Power - Resiliency Hub talks continued and began to sound more doable

How does Resiliency Look?

- Community Advisory Board
- Resiliency is Community Based and Community Led
- Shifting Power to Communities Including community controlled funds
- Taking and Maintaining Ownership in Exercising the Right to Self Determination

What is a Resiliency Hub?

The Petersburg Resiliency Hub is the first Solar Powered Community Hub in Virginia! Our Hub will operate as a One Stop Center to Provide Resources and offer the following:

- Safe haven during the Storms of Life - Heating and Cooling Center
- Provide Clean Safe Drinking Water, Nutritious Food, Clothing Boutique
- Training and Certifications toward self sufficiency
- Guided Historical Tours of the Hub and the Surrounding Community
- Connection to Retired Veterans

From Intentionally Divested to Resilient Self Sufficient Communities

CERT Training and Certification for youth and Adults

Certification in CPR, AED and Basic First Aid - ASHI Certified Instructors

Lead Inspections and Remediation Training and Certification

Mold Inspector, Worker, Supervisor Training and Certification

DMV 8-Hour Driving Improvement Clinic

DMV Escort Vehicle Training and Certification

Endless Possibilities

Future Plans Include

Green Jobs Training

Solar PV Panel Assembly and Installation

Source Clean Water Distributor

Access to Green Spaces - UPAL's Garden Labyrinth to address trauma and maintain mental and physical well being

Complete Community Solar



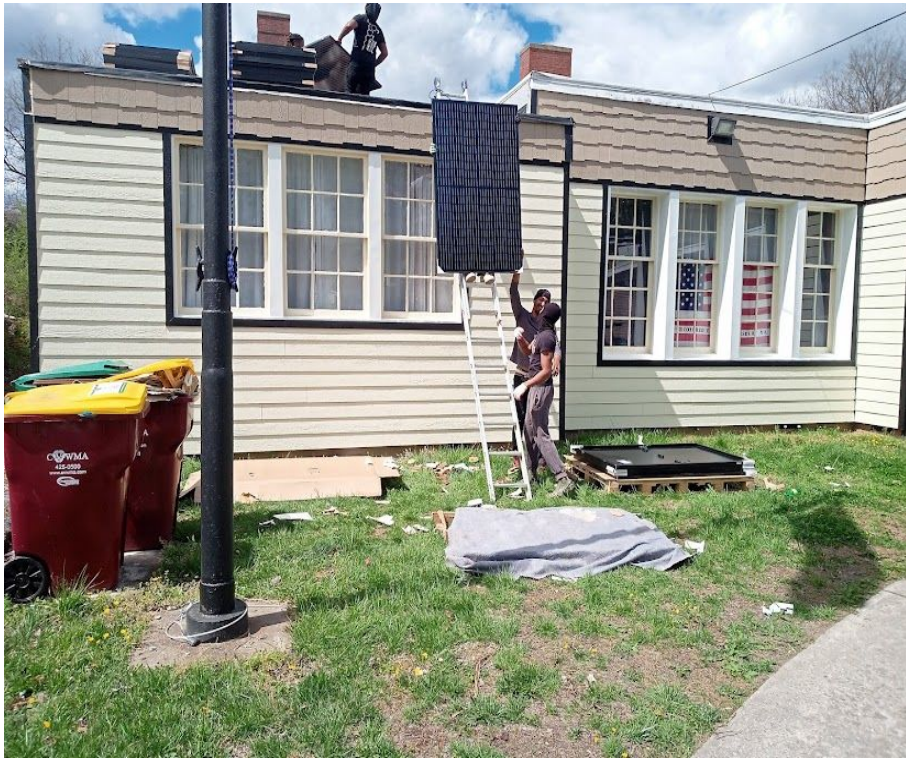
FIGGERS F3

Solar Panels Have Arrived

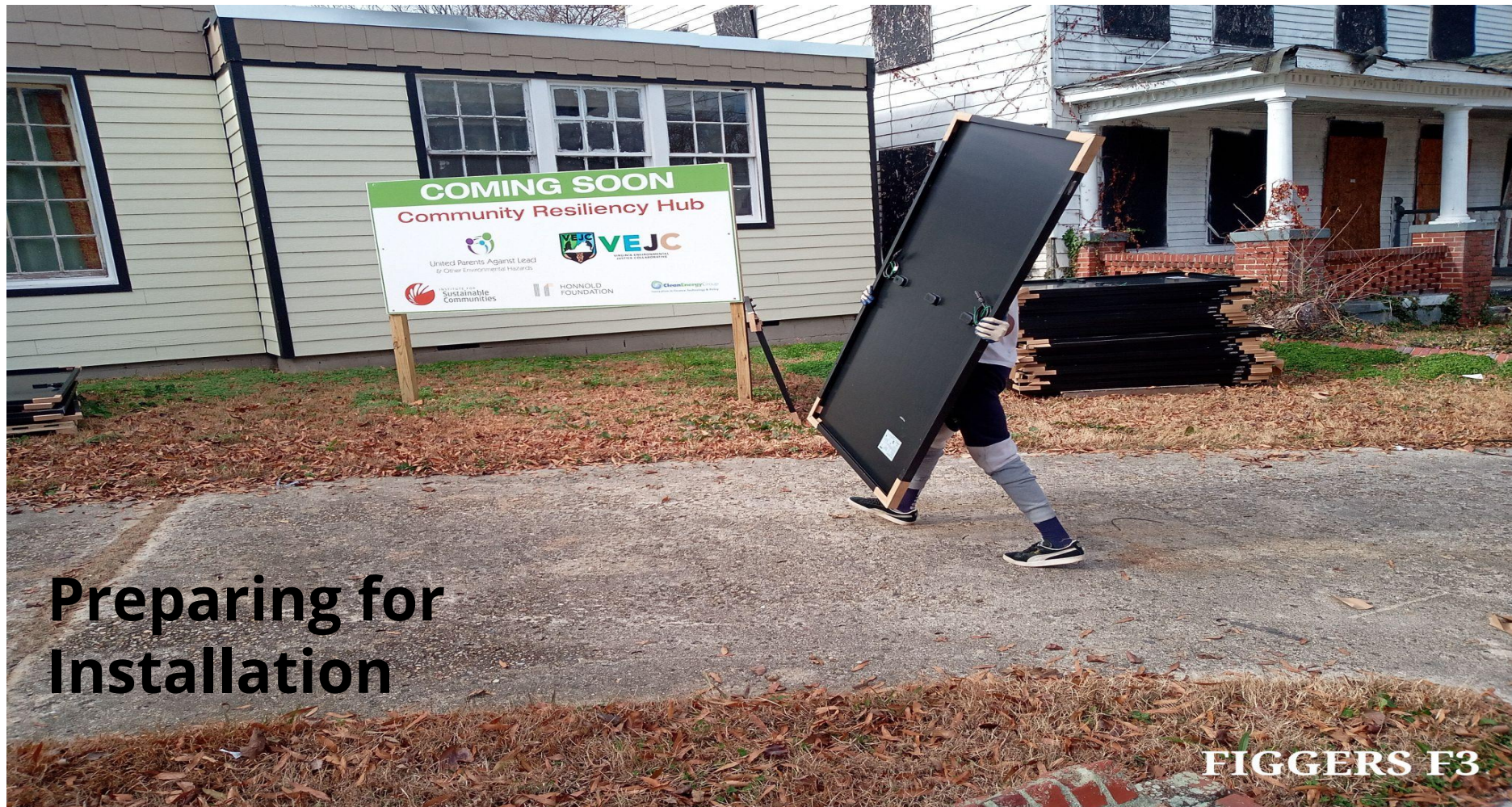
and will be installed under the guidance and direction of A. Massenburg, Inc. with a simultaneous solar panel installation class taught by Steve Shabazz of UPAL's Community Training Center offering certification to residents of the Heights.



Pictured All Graduates of UPALs Solar PV Installation Class September 2022, RPLI Funded Initiative







**Preparing for
Installation**

FIGGERS F3

BEFORE

and

AFTER



Former USO for Colored Troops

[464 Petersburg VA Proclamation - Google Docs](#)

You Are Invited



**United Parents Against
Lead & The Virginia
Environmental
Justice Collaborative
cordially invite YOU to the
Grand Opening
of the
Petersburg
Community
Resiliency Hub**

Saturday, April 30, 2022 2:00 pm

Ribbon Cutting Ceremony at 2:30

**464 Byrne Street
Petersburg, VA**

**Hosted by Steve & Queen
ShaBazz**

Please RSVP by April 18th

Virginia Department of Historic Resources

(www.dhr.virginia.gov)

For Immediate Release

March 17, 2022

State Adds 9 Historic Sites to the Virginia Landmarks Register

RICHMOND – Nine historic places were listed on the Virginia Landmarks Register today, including a recreational services facility in eastern Virginia for African American soldiers during military segregation in the 1940s, one of Shenandoah Valley’s earliest apple processing and storage facilities, and the sprawling farm of one of Southwest Virginia’s most prominent political figures and industrialists. Located in the **City of Petersburg**, the Byrne Street USO Club offered recreational services and entertainment programs for African American troops during World War II. The clubhouse remained in use as a recreational and community center for the city’s African Americans after the war and into the 2010s. The Byrne Street USO Club was constructed in 1942 as a United Service Organization (USO) facility. President Franklin D. Roosevelt created the USO on February 4, 1941, to maintain morale among soldiers shortly before the country entered World War II. The U.S. military provided supplies and labor for the construction of USO buildings. Until the end of the war, the Byrne Street USO Club functioned as a space for Black servicemen to socialize safely and for the troops and their families to receive aid. The clubhouse shared a variety of programs with Black servicemen and civilians in the City of Petersburg, from music recitals and scholarly presentations to radio broadcasts and sports activities.



From Climate Refugees to Climate Resilience

One Community at a Time

When government fails to protect us by rolling back environmental protections then it is our God given, moral and human right to protect, to save ourselves!

And Raise Our Communities Back to Their Original Heights



[Preserving History: Virginia Environmental Justice Collaborative's USO Club - YouTube](#)



FIGGERS F3



Solar Powered Community Resiliency Hub

Joint Venture of
United Parents Against Lead (UPAL) and
Virginia Environmental Justice Collaborative (VEJC)

Website: [UPAL \(upalnational.org\)](http://upalnational.org) [Home | VEJC \(vaejc.com\)](http://vaejc.com)

Contact Information: unitedparentsagainstlead@gmail.com



804.370.1143
