

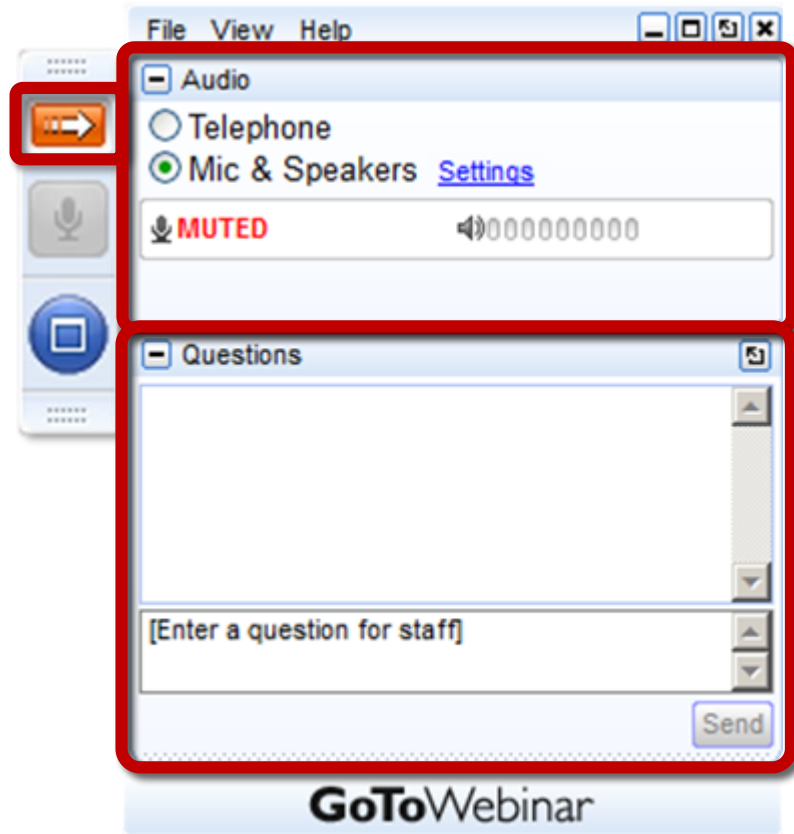
# RESILIENTPOWER

A project of CleanEnergyGroup



## Greenlink Equity Map: Visualizing Equity Issues to Build Stronger Climate Solutions

# WEBINAR LOGISTICS



Join audio:

- Choose Mic & Speakers to use VoIP
- Choose Telephone and dial using the information provided

Use the orange arrow to open and close your control panel

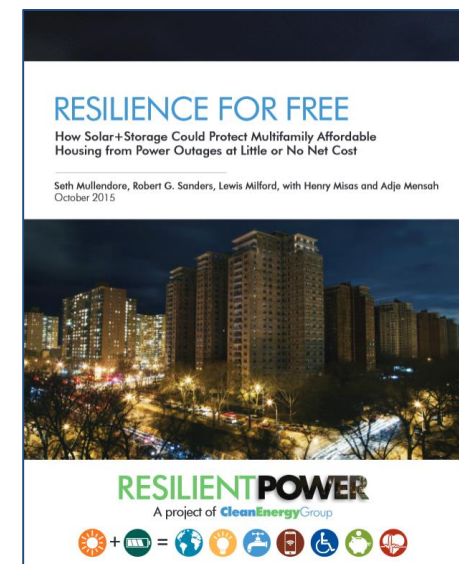
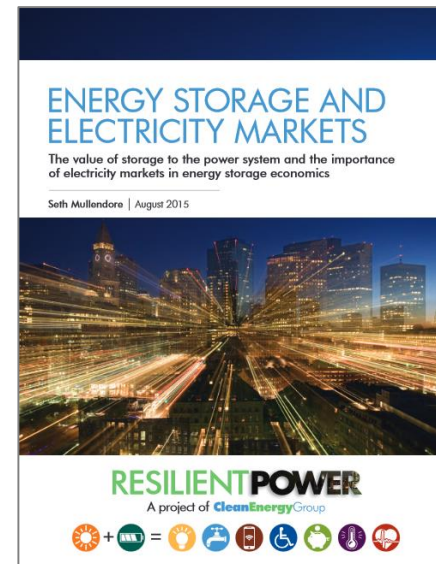
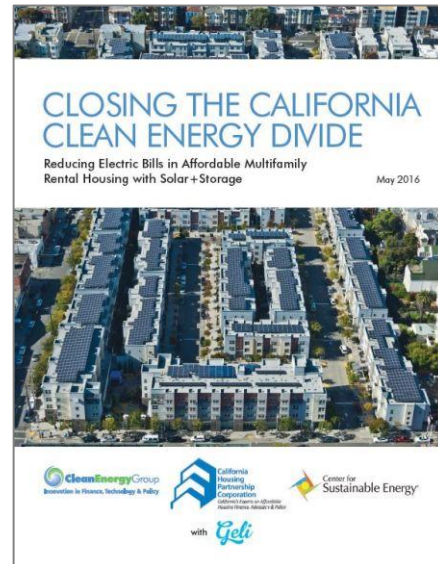
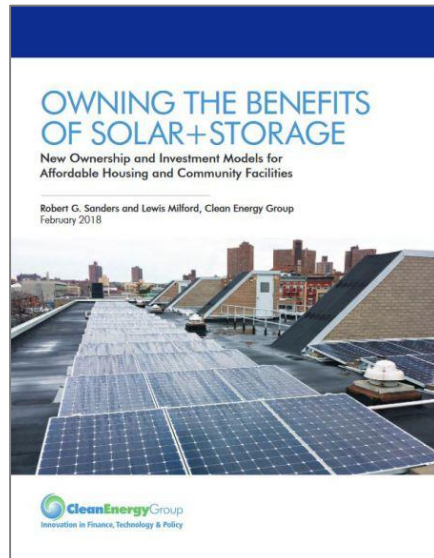
Submit questions and comments via the Questions panel

This webinar is being recorded. We will email you a webinar recording within 48 hours. CEG's webinars are archived at [www.cleangroup.org/webinars](http://www.cleangroup.org/webinars)



# THE RESILIENT POWER PROJECT

- Increase public/private investment in clean, resilient power systems (solar+storage)
- Protect low-income and vulnerable communities, with a focus on affordable housing and critical public facilities
- Engage city, state and federal policy makers to develop supportive policies and programs
- Visit [www.resilient-power.org](http://www.resilient-power.org) for more information and resources





# SUPPORTING 250+ PROJECTS ACROSS THE COUNTRY



# WEBINAR SPEAKERS



**Yeou-Rong Jih**  
Director of Urban  
Initiatives, Greenlink  
Analytics



**Minna Toloui**  
Upright Consulting  
Services, LLC



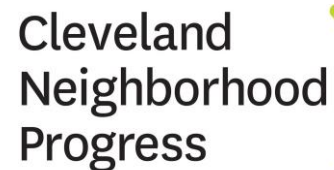
**Divya Sridhar**  
Manager of Climate  
Resiliency and  
Sustainability,  
Cleveland  
Neighborhood Progress



**Deepa Vedavyas**  
Sustainability  
Manager, Mayor's  
Office of  
Sustainability,  
Cleveland



**Seth Mullendore**  
Vice President and  
Project Director,  
Clean Energy Group  
(moderator)





# Greenlink Equity Map & Process Guide

Greenlink Analytics, Upright Consulting Services,  
City of Cleveland, and Cleveland Neighborhood Progress

12/8/2020



# Welcome!

- Introductions & Background - 3m
- **gem** Platform Demo - 10m
- **gem** Process Guide - 7m
- **gem** Cleveland Use Case - 15m
- Next Steps - 5m
- Q&A - 20m





# Introductions & the GEM Team

- **Greenlink Analytics:**

- Matt Cox
- Etan Gumerman
- Yeou-Rong Jih
- Christine Lacayo
- Samantha McDonald
- Kavin Manickaraj

- **Upright Consulting Services:**

- Jeremy Hays
- Minna Toloui

- **Special Guest - City of Cleveland:**

- Deepa Vedavyas

- **National Project Team:**

- Divya Sridhar, Cleveland Neighborhood Progress
- Chandra Farley, Partnership for Southern Equity
- Cheyenne Flores, City of Philadelphia
- Desiree Williams-Rajee, Kapwa Consulting
- Lauren Ross & Ariel Drehabl, ACEEE
- Mayra Cruz, Catalyst Miami
- Rosa Gonzalez, Facilitating Power
- Oriana Magnera, Verde

# Special Thanks To:



**Funders**

THE  
**KRESGE**  
FOUNDATION



**Bloomberg  
Philanthropies**

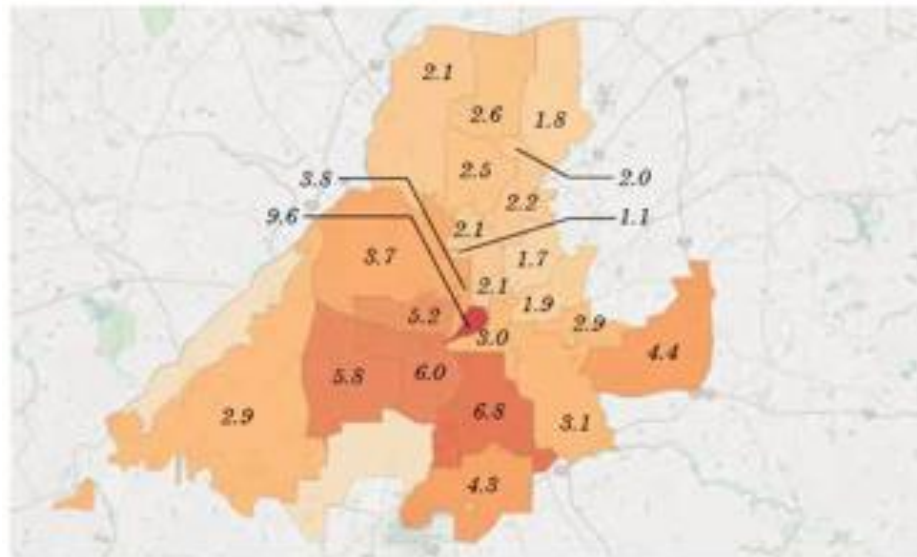
**American Cities  
Climate Challenge**



**80 Interviewees**



# Establish Partnerships: Bring People and Data Together



Atlanta Residential  
Electricity Burden By ZIP  
Code

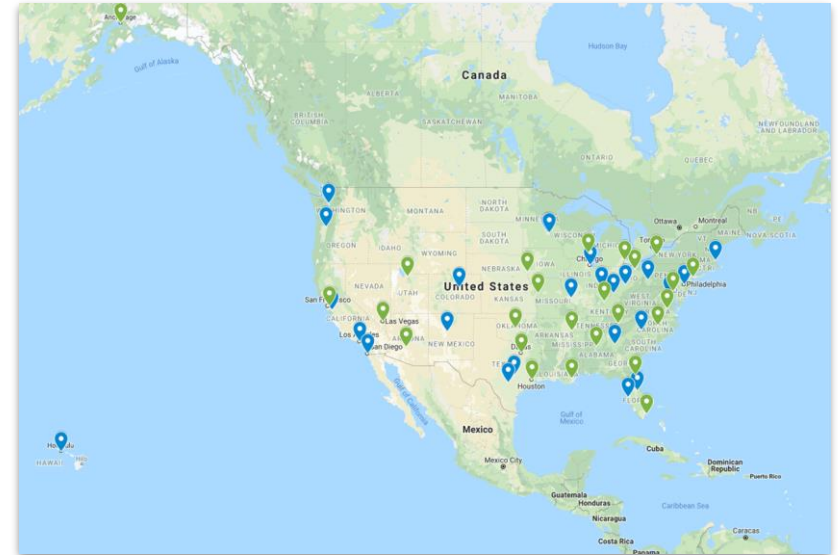
1.1% 9.6%

Clean Energy Atlanta (2018)



# Maps are a Starting Point

- **Creation of the GEM Platform**
  - Incorporate social equity into city climate policy & programs.
  - Equity data access is major challenge for cities and communities.







# Equity Indicators



Category	Equity Indicators
Demographics	Racial Composition
Energy & Water Utility Burdens	Energy Burden Water Burden # of Households above a 3%, 6% & 10% Burden
Health	Asthma Lack of Health Insurance
Housing	Eviction Rates Living Cost Burden # of Households above a 30% Housing Burden Renter or Owner
Technology	Internet Accessibility
Wealth	Income

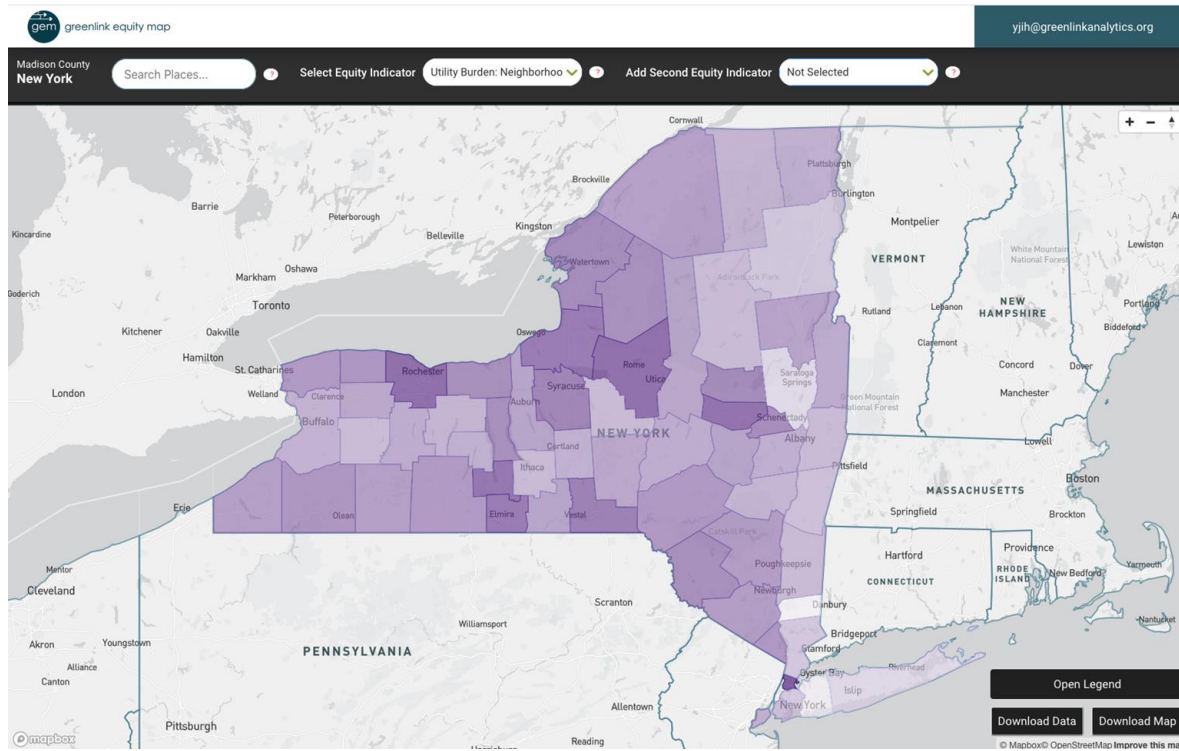


# Energy Burden

- The amount of yearly income that residents pay for electricity and gas bills
  - ~3% nationally, 6% high, 10%+ severe
- **Impacts:**
  - FDIC: **#1 reason for a payday loan** is to a pay utility bill
  - **31% of Americans** have gone without a meal or a prescription to pay a bill
  - Energy burden exacerbated by **COVID-19** due to higher energy use + impacted incomes
- GEM methodology enables mapping of neighborhood averages and number of households in burden.



# NYC Demo





# Process Guide for City-Community Relationships

- Lead Author: Rosa Gonzalez of Facilitating Power
- Written specifically for an audience is city staff and those who support them. Key input from the National Project Team.
- A step-by-step guide to collaborative data analysis, joint meaning-making, and **building relationships with impacted communities using GEM platform and data.**
- We plan for cities to fully use the guide *as part of* the GEM package. Support for practitioners implementing the guidance are coming soon.

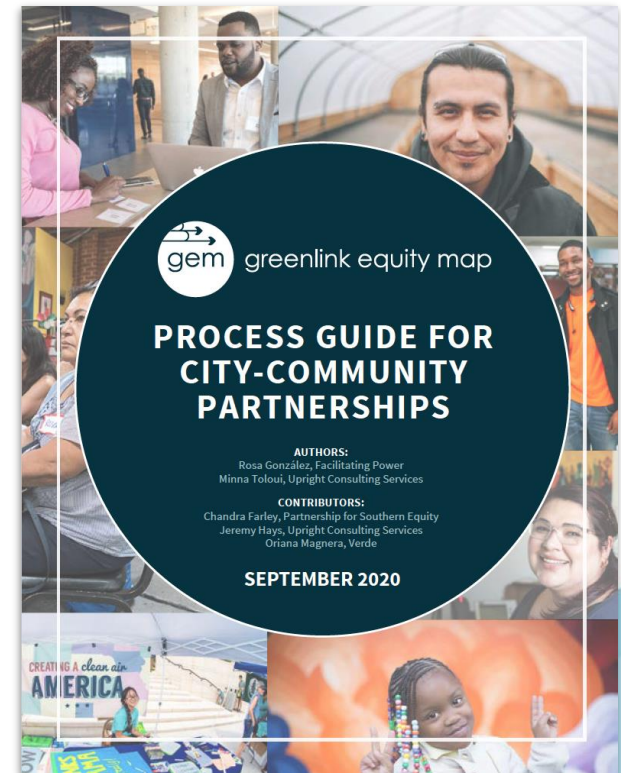






# Process Guide for City-Community Relationships

- Progress on climate equity requires productive working relationships between city government and frontline communities.
- Coming together to share perspectives and explore data, i.e. **“joint meaning making,”** can help facilitate mutual understanding, build relationships, and lay a foundation for collective action.



## **1 FRAMING**

Tool: The Spectrum of Community Engagement to Ownership  
Ecosystem Approach to Regional Racial Equity

## **2 PREPARATION for COLLABORATIVE DATA ANALYSIS**

Clarify what Equity Means and Why it is Core to Climate Action  
Set Goals Together  
Build Facilitation Capacity  
Develop a Timeline that Works for Community Partners  
Co-Design a Process for Shared Analysis of the Data

## **3 CONDUCTING COLLABORATIVE DATA ANALYSIS**

Single Conversation  
Four-Meeting Process  
Essential Elements for Translating Learning into Action

## **4 FOLLOW-THROUGH FOR SUSTAINED ACTION**

Evaluation & Reflection  
Sharing the Data (and Stories!) More Widely  
Investing in Community Partnerships



# Cleveland Use Cases

In 2018, Mayor Frank G. Jackson committed to goal of 100% Clean and Renewable Electricity by 2050.

- Cleveland became the first city in Ohio to commit.
- Secured a Partners for Places grant in 2019 to develop a community-wide transition plan
  - Focus on energy equity
  - Workforce Development
- Comprehensive approach
  - Inform policies
  - Compare scenarios
- Collaborative effort



## Core Partners



Cleveland  
Neighborhood  
Progress

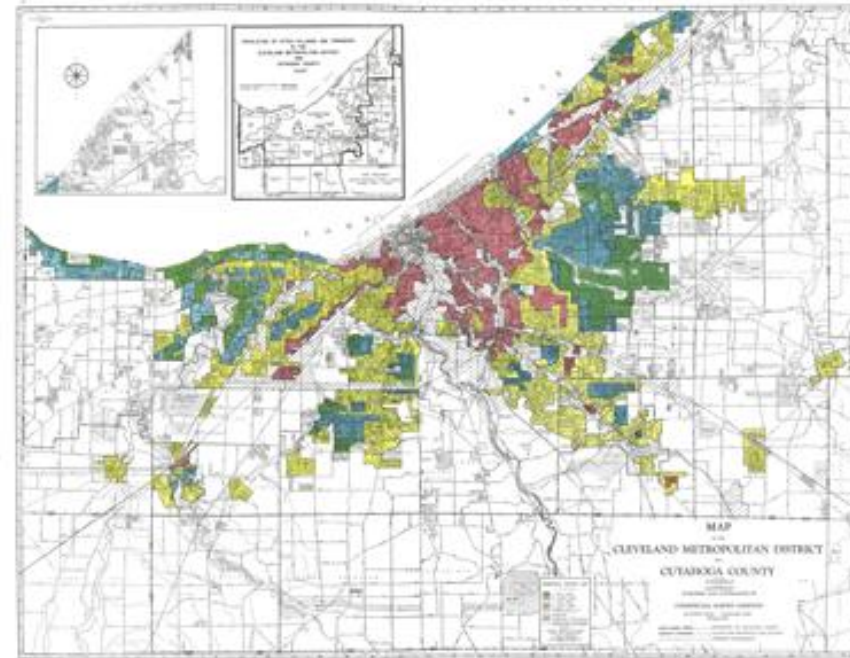
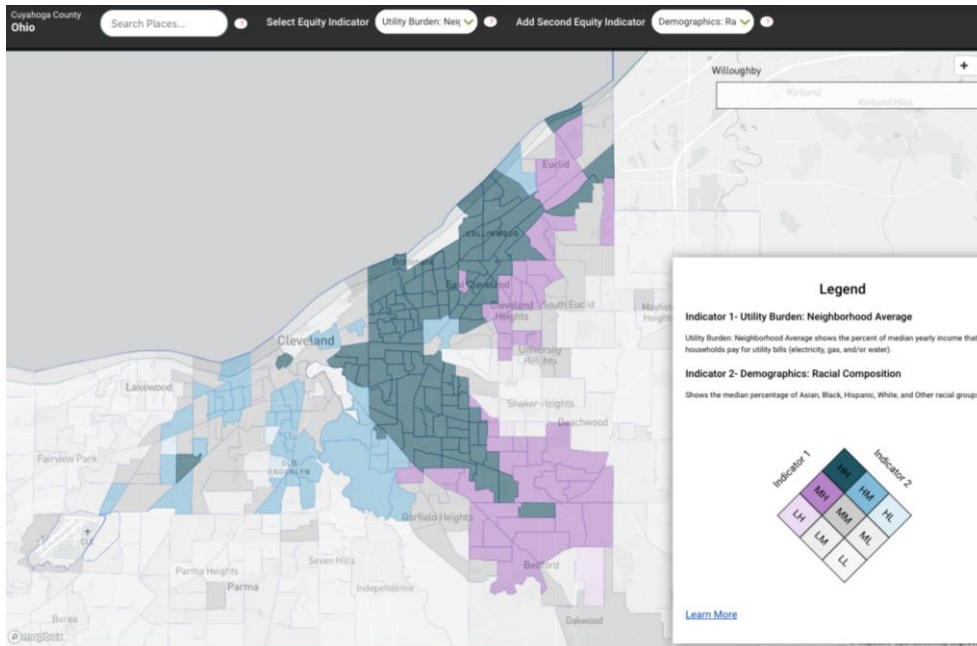


GRAY CONSULTING GROUP





# Cleveland Use Cases



- Cleveland is in the top 10 most segregated city in the country
- Highest level of energy burden concentration is the historically black communities
- 100+Black and 30+ Brown census tract in Cleveland have energy burdens in the top third for the city, exceeding 10%





# Cleveland Use Cases



**Energy Efficiency & Green Building**



**Clean Energy**



**Sustainable Transportation**



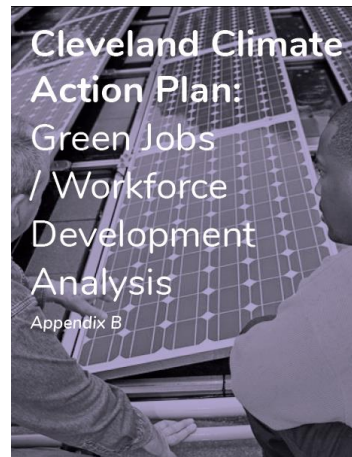
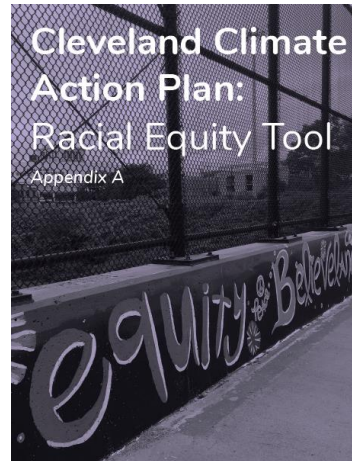
**Clean Water & Vibrant Green Space**



**More Local Food, Less Waste**



**Cross-Cutting Priorities**



**Integrative Process**



**Natural Systems & Ecology**



**Transportation & Land Use**



**Water Efficiency**



**Energy & GHG Emissions**



**Materials & Resources**



**Quality of Life**



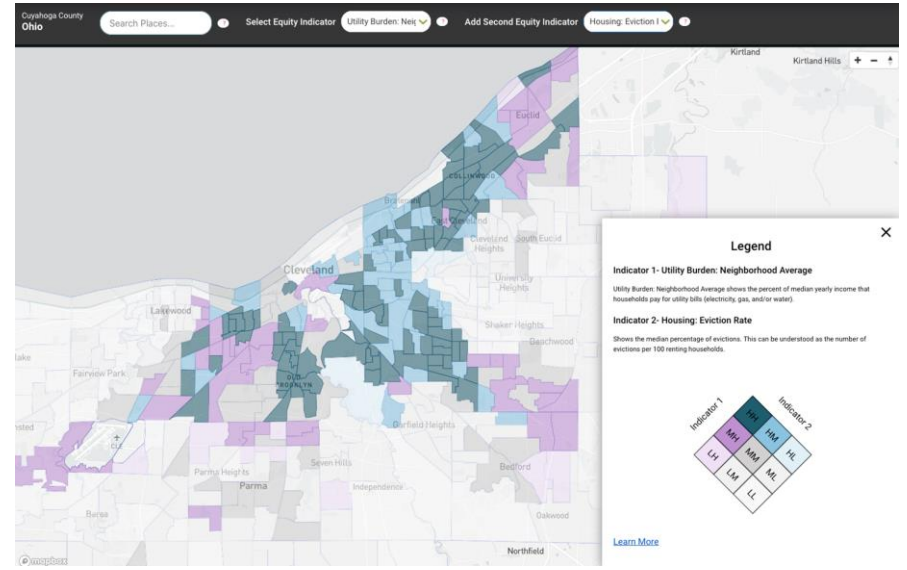
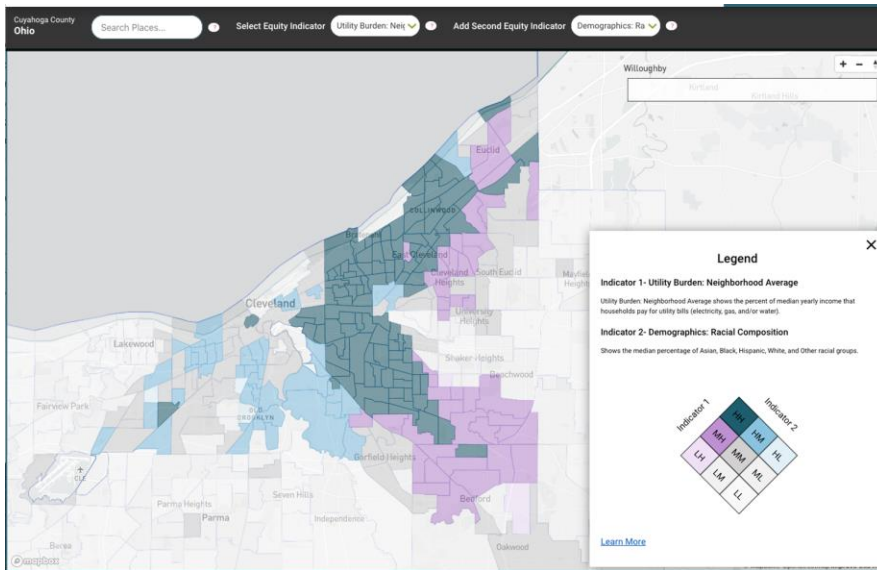
**Innovation**



**Regional Priority**



# Cleveland Use Cases



Cleveland  
Neighborhood  
Progress



DRINK LOCAL  
DRINK TAP™

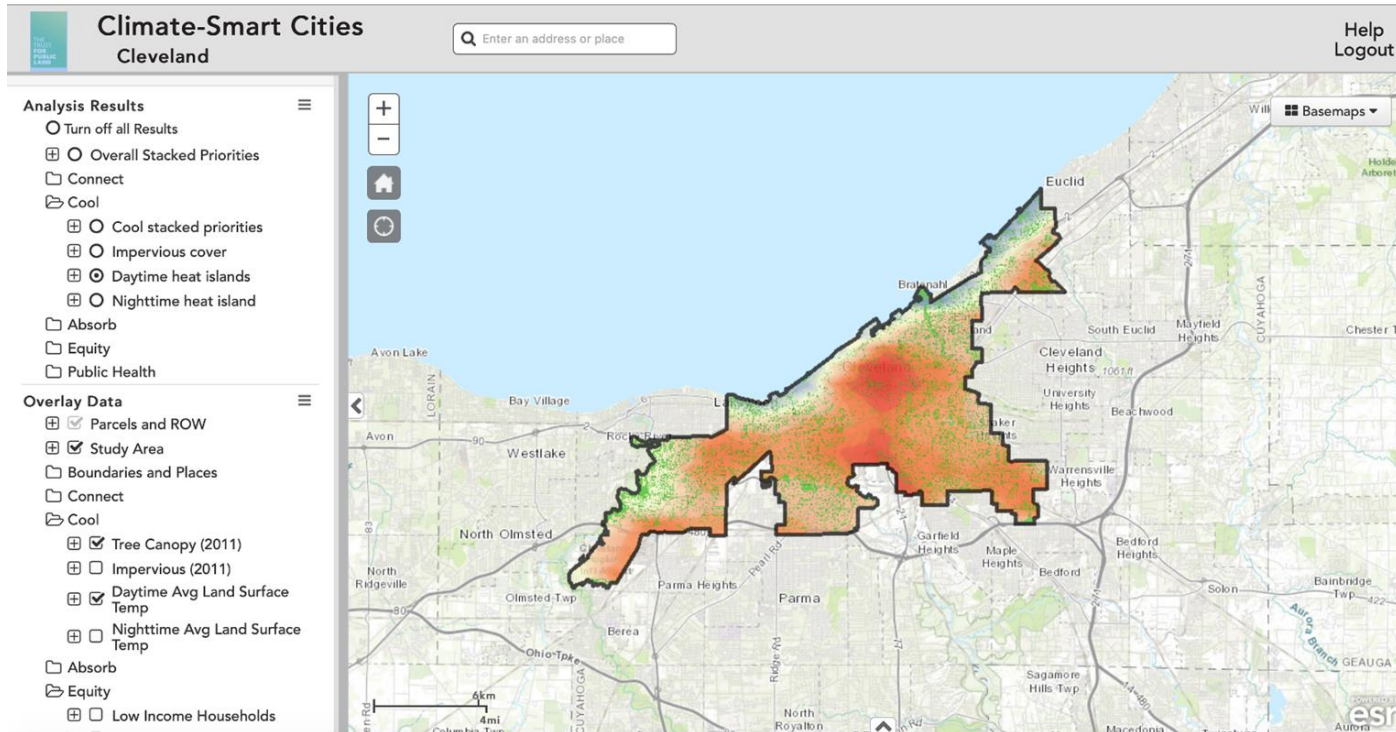


GRAY CONSULTING GROUP



# Cleveland Use Cases

Creating a shared vocabulary and acknowledgement builds trust.



Layer in tree plan in heat islands and high burdens communities develop heat plan

Creating intentional tree maintenance plan as a part of water equity and climate justice





# Making Bold Change



More info at [www.equitymap.org](https://www.equitymap.org)

- Case-Making
  - Process Equity
  - Policy Design
  - Explore Policy Impacts
  - Project Better Paths
- 
- Better Process → Better Outcomes





# Next Steps

- **gem Access**
  - Kresge Foundation Grant
    - City staff in NYC
    - CBO access in NYC starting 2021
  - City and state-level subscription
- **gem Support**
  - GLA Office Hours and Demos
  - [admin@greenlinkanalytics.org](mailto:admin@greenlinkanalytics.org)
- **Upcoming Tools**
  - Community of Practice for Cities



# Questions?

How might your  
community use these maps?





# Thank You!

 [admin@greenlinkanalytics.org](mailto:admin@greenlinkanalytics.org)

 [www.equitymap.org](http://www.equitymap.org)

 [@greenlinkanalytics](https://www.facebook.com/greenlinkanalytics)

 [@greenlinkgroup](https://twitter.com/greenlinkgroup)

 [@greenlinkanalytics](https://www.linkedin.com/company/greenlinkanalytics)

# Thank you for attending our webinar

**Seth Mullendore**

Vice President and Project Director

Clean Energy Group

[seth@cleanegroup.org](mailto:seth@cleanegroup.org)

**Find us online:**

[www.resilient-power.org](http://www.resilient-power.org)

[www.cleanegroup.org](http://www.cleanegroup.org)

[www.facebook.com/clean.energy.group](https://www.facebook.com/clean.energy.group)

@cleanenergygrp on Twitter

@Resilient\_Power on Twitter



# Upcoming Webinars

**FERC Order 2222: How it will level the playing field for distributed energy storage and other DERs**

*Thursday, December 10, 2-3pm ET*

**Using Overbuilding + Curtailment to Achieve 100% Clean Electricity**

*Tuesday, December 15, 3-4pm ET*

**Closing the Energy and Transportation Affordability Gap for Connecticut's Low- and Moderate-Income Households**

*Thursday, December 17, 1-2pm ET*

**Solar+Storage Fire Safety Training**

*Tuesday, January 12, 1-2pm ET*

Read more and register at: [www.cleangroup.org/webinars](http://www.cleangroup.org/webinars)