

## **Northeast Wind Resource Center Webinar**

# **Northeast Ocean Planning and Offshore Wind**

Hosted by  
Val Stori, Clean Energy Group  
October 20, 2016

# Housekeeping



The screenshot shows the GoToWebinar interface. At the top is a menu bar with 'File', 'View', and 'Help'. Below it is the 'Audio' section, which has two radio buttons: 'Use Telephone' (selected) and 'Use Mic & Speakers'. There are input fields for 'Dial:', 'Access Code:', and 'Audio PIN:'. A note below these fields says 'If you're already on the call, press #8# now.' Below the Audio section is the 'Questions' section, which has a large text area for entering questions and a 'Send' button at the bottom right. At the very bottom of the window, it says 'Test webinar', 'Webinar ID: 844-857-840', and the 'GoToWebinar' logo.

← All participants are in “Listen-Only” mode. Select “Use Mic & Speakers” to avoid toll charges and use your computer’s VOIP capabilities. Or select “Use Telephone” and enter your PIN onto your phone key pad.

← Submit your questions at any time by typing in the Question Box and hitting Send.

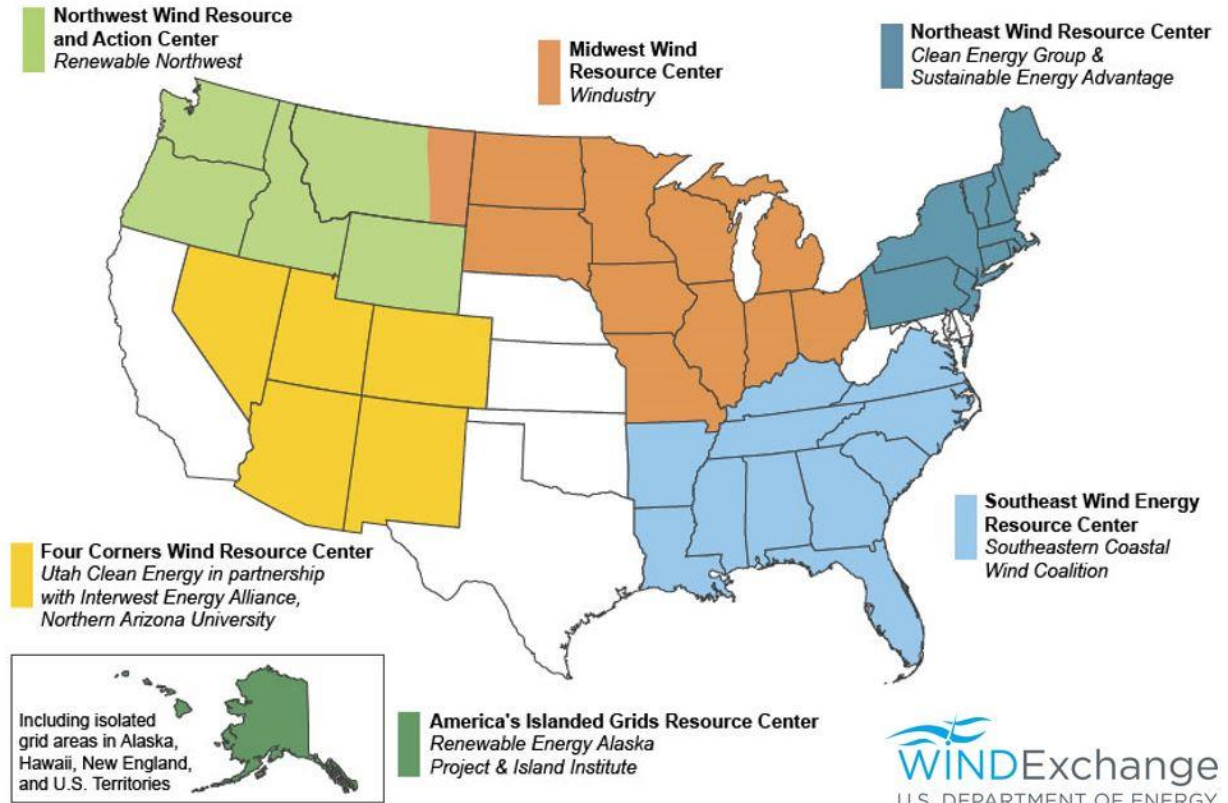
**This webinar is being recorded.**

You will find a recording of this webinar in the NWRC Resource Library at: [www.northeastwindcenter.org/resource-library/](http://www.northeastwindcenter.org/resource-library/)

# About WINDEXchange

WINDEXchange is the U.S. Department of Energy (DOE) Wind Program's platform for disseminating credible information about wind energy. The purpose of WINDEXchange is to help communities weigh the benefits and costs of wind energy, understand the deployment process, and make wind development decisions supported by the best available information.

On March 11, 2014, the U.S. Department of Energy (DOE) announced six Wind Energy Regional Resource Centers that were selected through a competitive process administered by the National Renewable Energy Laboratory (NREL).





# The Northeast Wind Resource Center

The Northeast Wind Resource Center (NWRC) is the regional epicenter for salient, unbiased information on land-based and offshore wind energy in the Northeastern United States. Published research, studies, and analyses associated with the issues impacting public acceptance of wind deployment are available in the NWRC Resource Library.

The NWRC is supported in part by a grant from the U.S. Department of Energy, and is managed by Clean Energy Group and Sustainable Energy Advantage. The Maine Ocean & Wind Industry Initiative serves as key liaison to the wind industry.

[www.northeastwindcenter.org](http://www.northeastwindcenter.org)

# Today's Guest Speakers

- **Jen McCann**, University of Rhode Island Coastal Resources Center and Rhode Island Sea Grant
- **Bob LaBelle**, Bureau of Ocean Energy Management





# The Ocean SAMP: A Policy and Planning Tool to Help Advance Offshore Wind Development

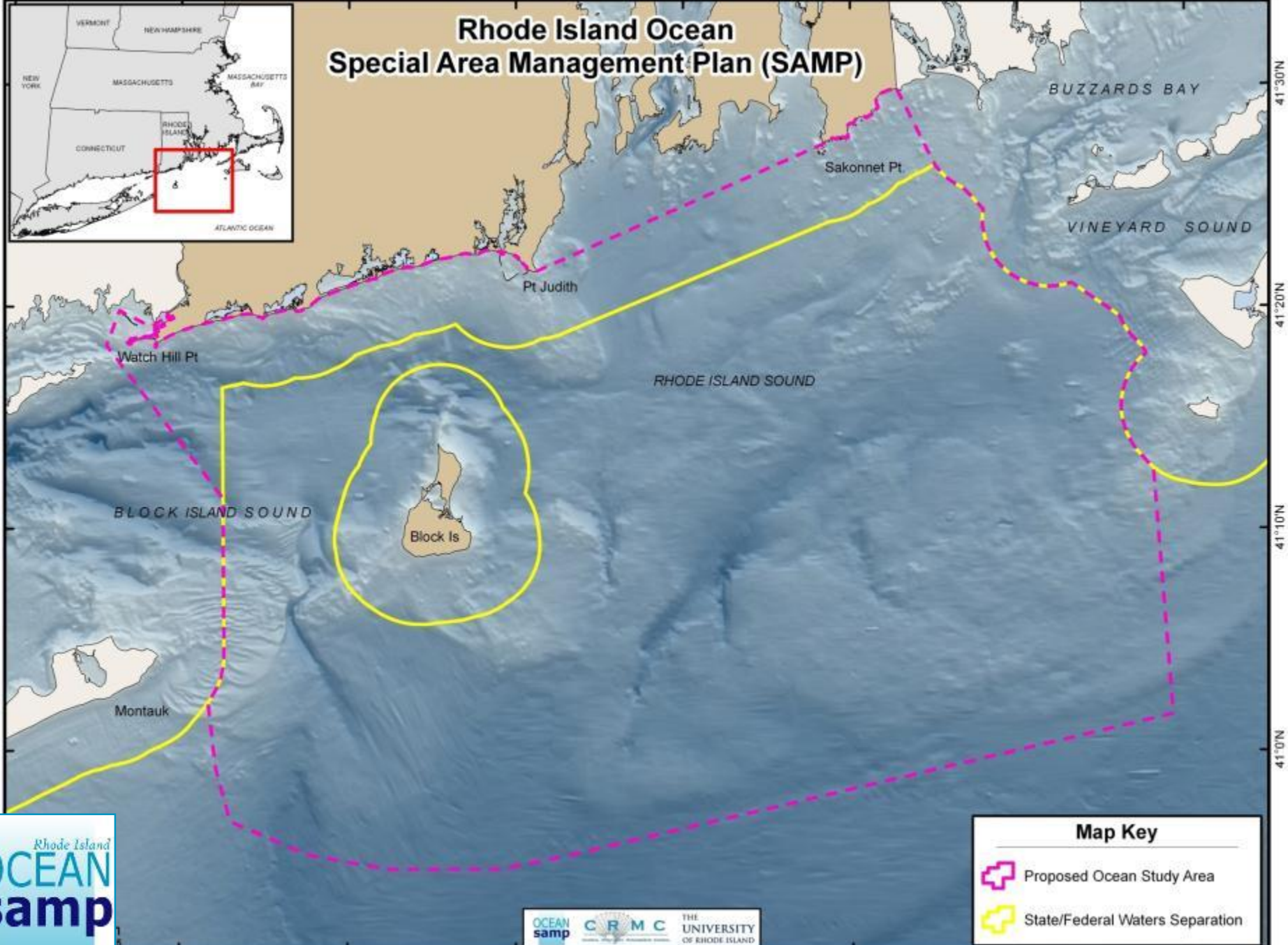
Jennifer McCann,  
URI Coastal Resources Center  
October 20, 2016




72°0'W 71°50'W 71°40'W 71°30'W 71°20'W 71°10'W 71°0'W 70°50'W




# Rhode Island Ocean Special Area Management Plan (SAMP)

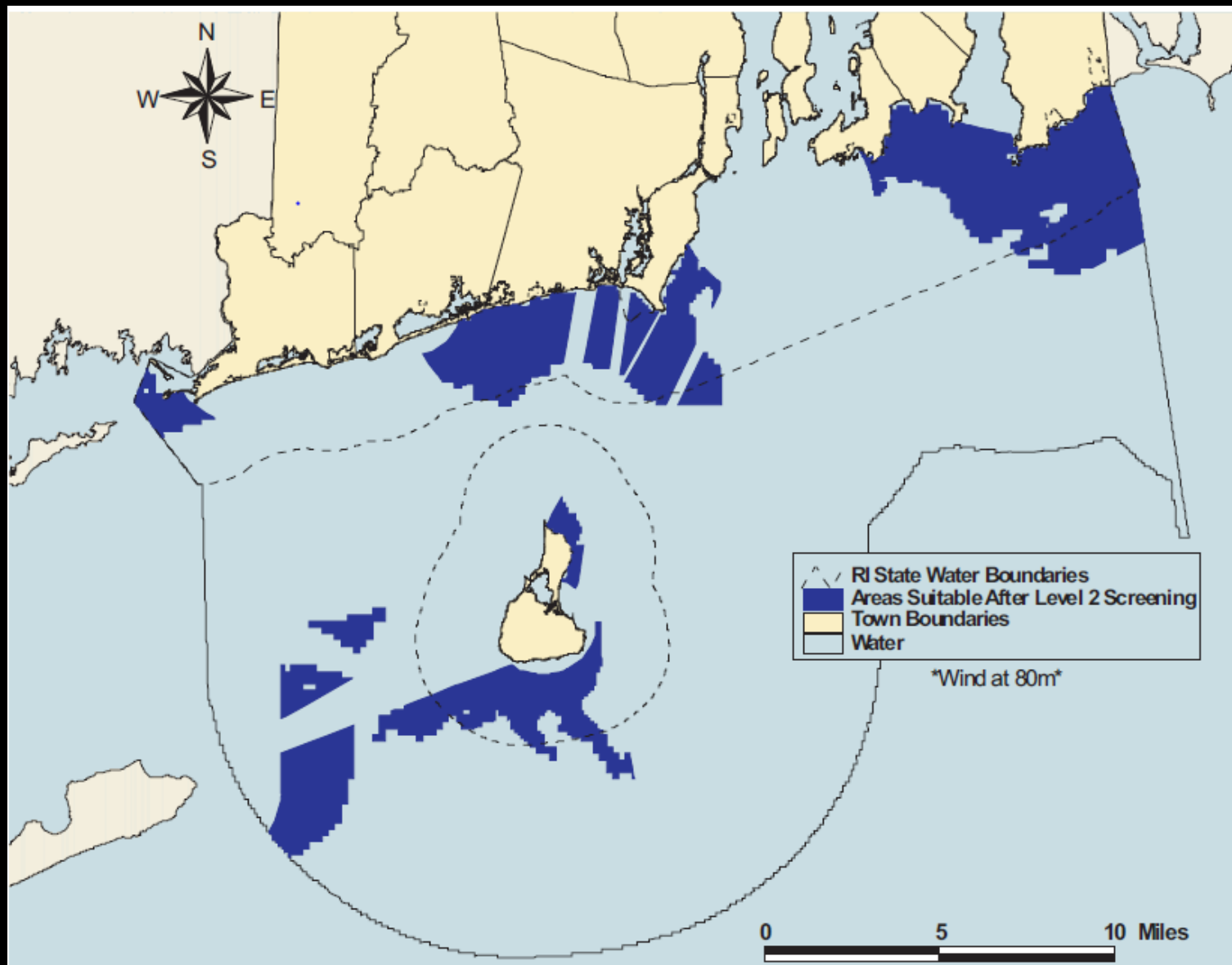


**Map Key**

 Proposed Ocean Study Area

 State/Federal Waters Separation

# A Done Deal?







*Images: The  
Electron Project  
(Cape Spin)*

# SAMPs are Tools with Teeth

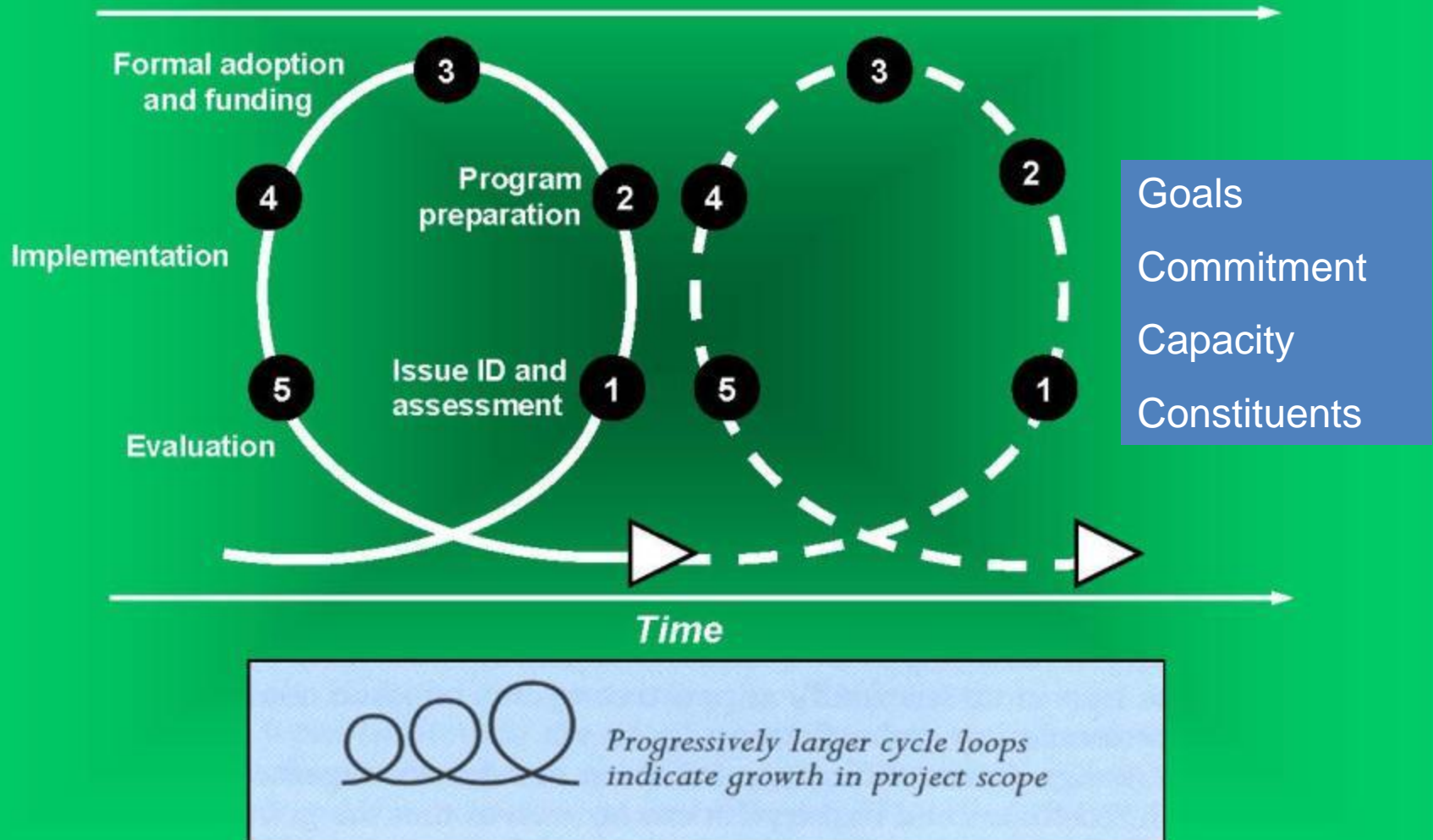
- Ecosystem-based Management Approach
- State leads the Effort
- Regulatory, planning, and adaptive management tool





# A Strategic Process for Effecting Change

*More sustainable forms of coastal development*



# Place-based Issue - Turbines

- Will restrict our fishing and put us out of **business**
- **Collisions** will be significant
- Our **wildlife** will be harmed
- **Tourists** will hate looking at the turbines
- Cables are going to effect **health** of wildlife & all Rhode Islanders
- Maybe this will create new **jobs** & industries





# Ocean SAMP Process Issues

- This is a “done deal”
- The state already knows the answers
- This will not be a transparent process
- Stakeholders will not have influence over siting or any other regulations.
- The timeframe is too short to do a well-thought out process.
- How can the Ocean SAMP really reduce the permitting time frame for the installation of offshore wind turbines?
- How can the Ocean SAMP be just a routine program change and not an EIS?



# SAMP Goals

1. Foster a properly functioning ecosystem.
2. Promote and enhance existing uses.
3. Encourage marine-based economic development, including offshore renewable energy infrastructure.
4. Build a framework for coordinated decision-making.

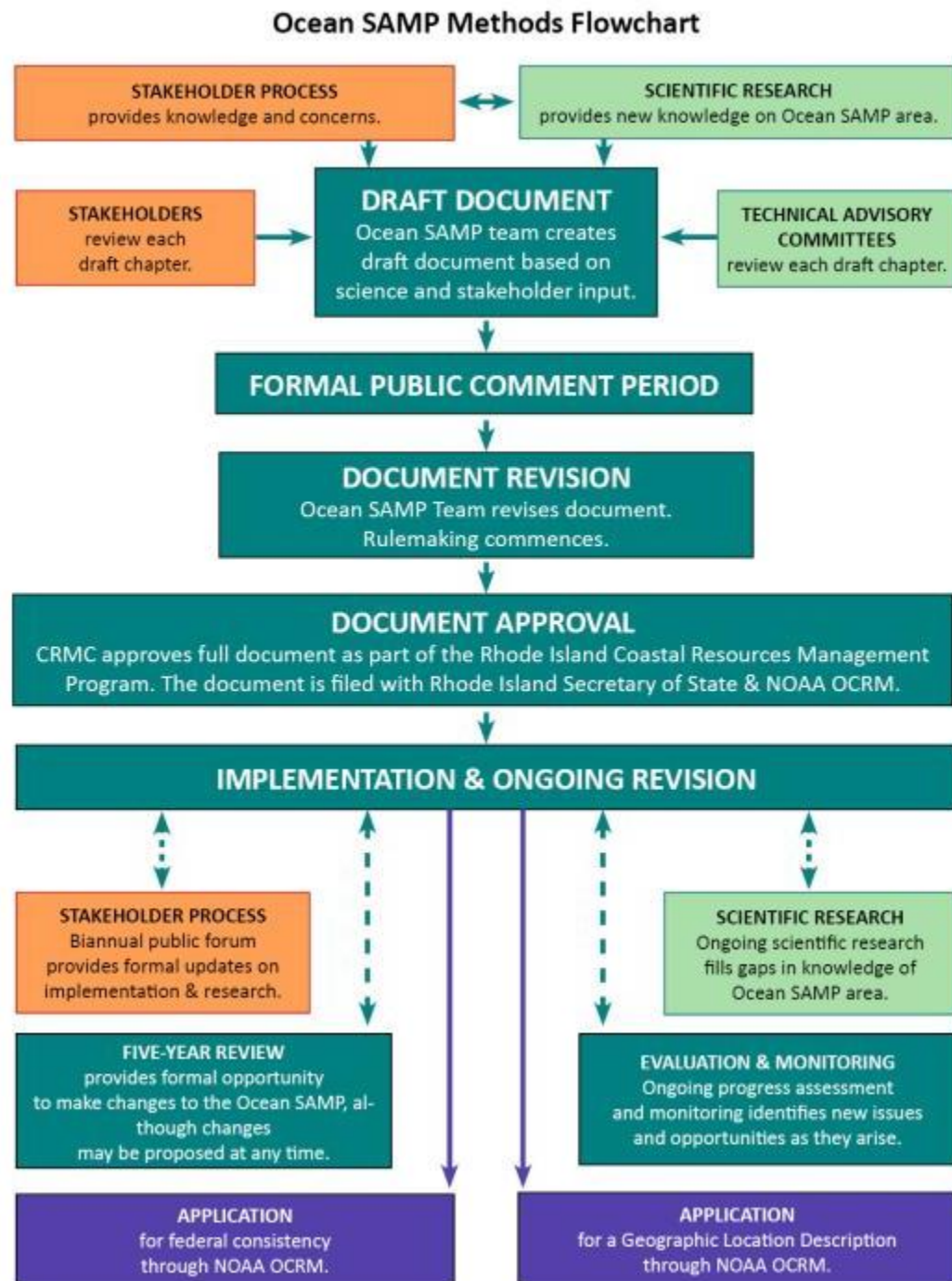


# Principles

1. Develop transparently
2. Involve all stakeholders
3. Honor existing activities
4. Use best available science
5. Monitoring and evaluation that supports adaptive management

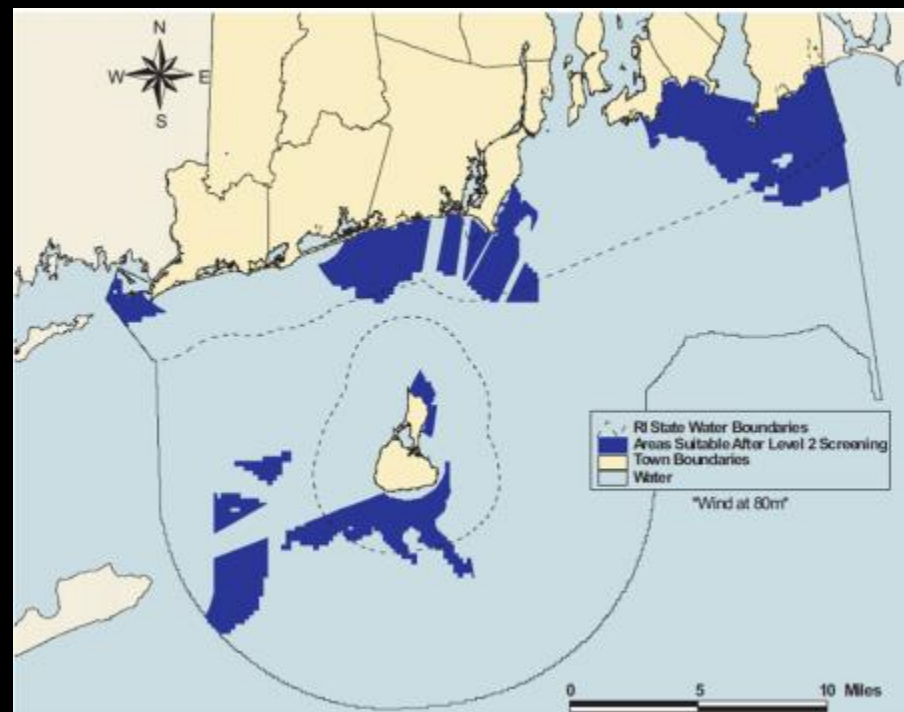
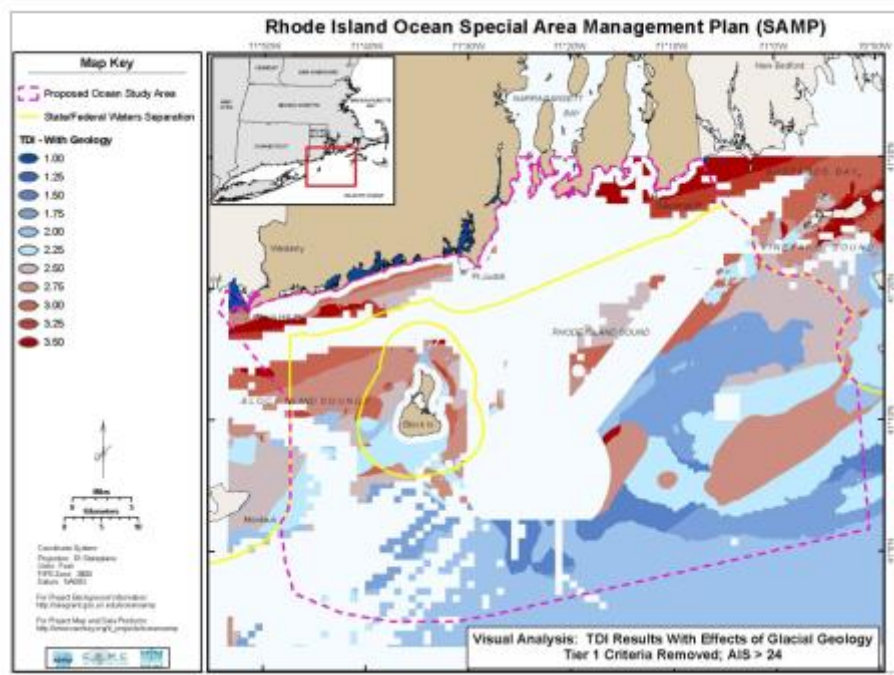
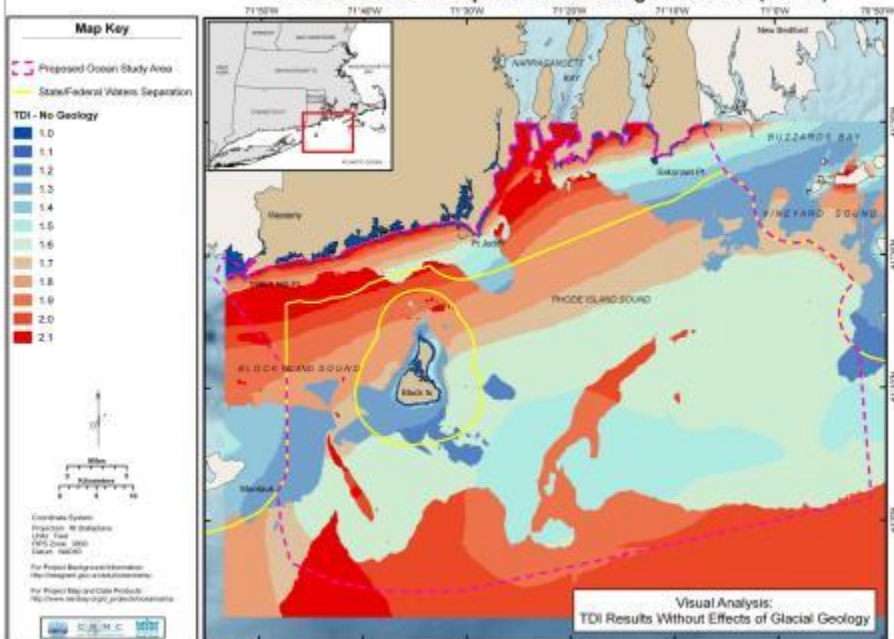


# Ocean SAMP Methods Flowchart








# Rhode Island Ocean Special Area Management Plan (SAMP)

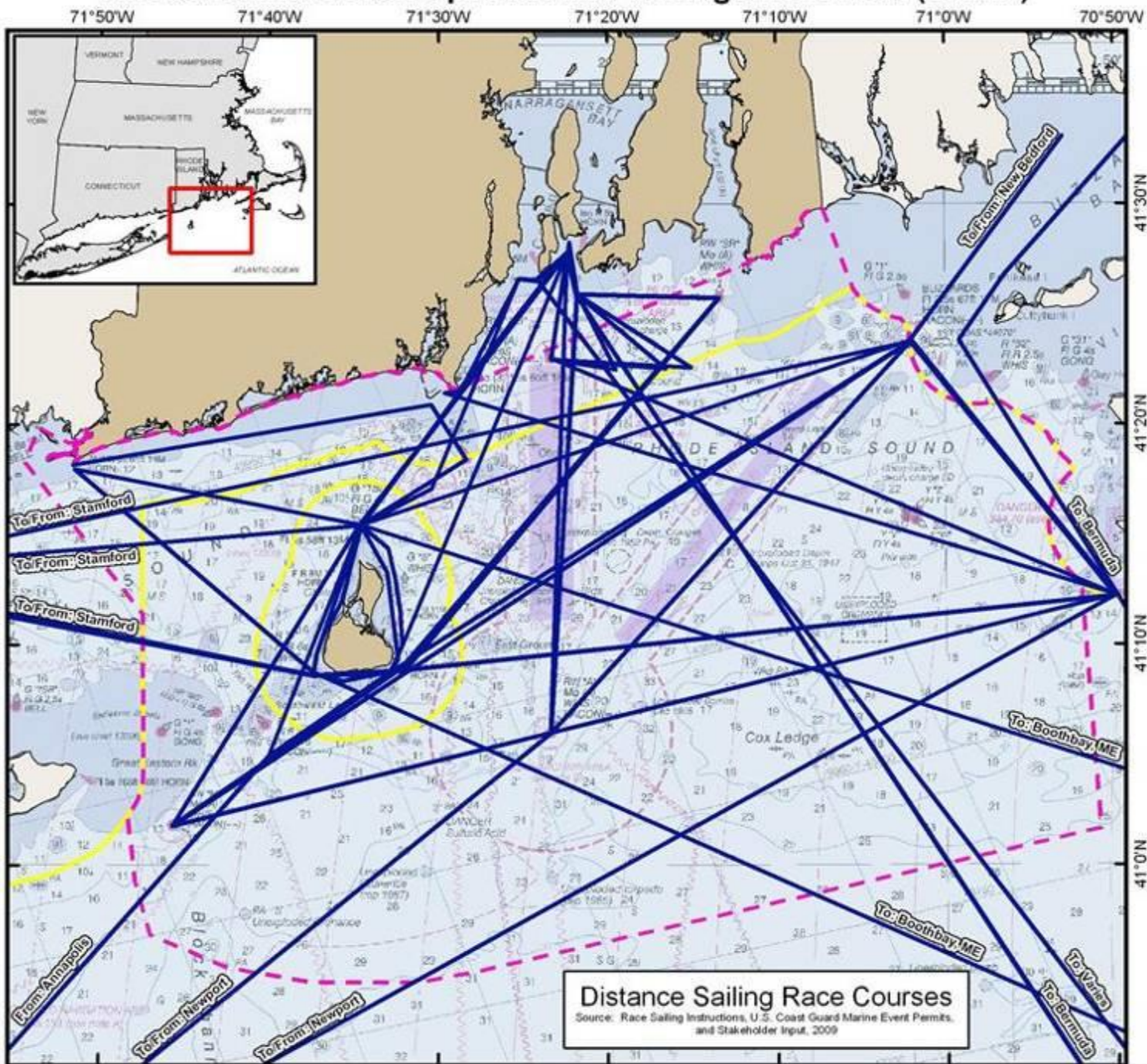




# Rhode Island Ocean Special Area Management Plan (SAMP)

### Map Key

-  OceanSAMP Study Area
-  State Waters
-  Distance Sailing Courses



Coordinate System:  
Projection: RI Stateplane  
Units: Feet  
FIPS Zone: 3500  
Datum: NAD83

Map Base Data:  
State Borders: RIGIS; MAGIS; CTGIS  
SAMP Study Area: RI SAMP Database  
State Waters: MMS SLA Boundary  
Bathymetry: Interpolated from NOS Soundings

For Project Background Information:  
<http://seagrant.gso.uri.edu/oceansamp>

For Project Map and Data Products:  
[http://www.nambya.org/old\\_projects/oceansamp](http://www.nambya.org/old_projects/oceansamp)





# Rhode Island Ocean Special Area Management Plan (SAMP)

71°50'W 71°40'W 71°30'W 71°20'W 71°10'W 71°0'W 70°50'W


## Map Key

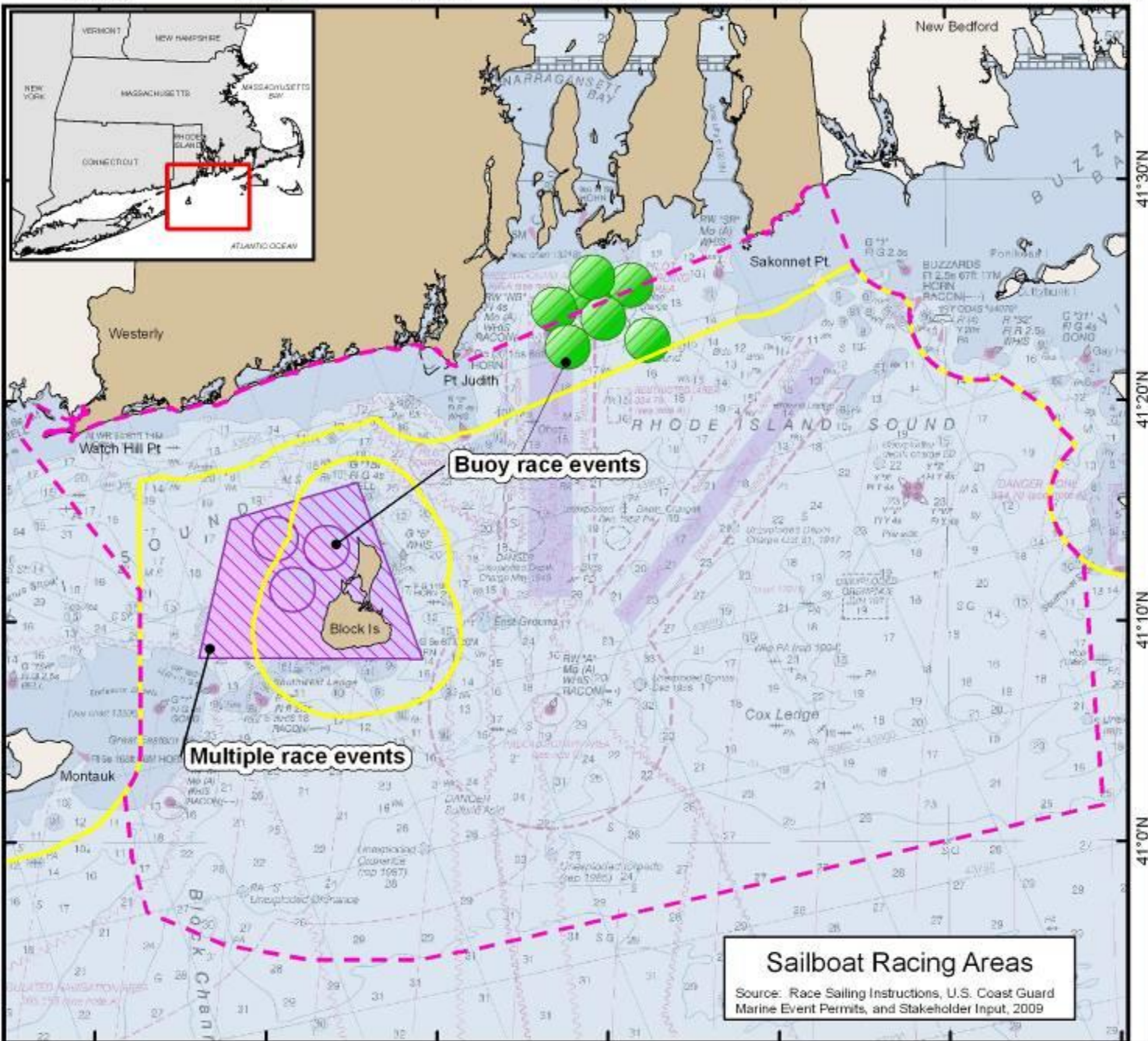
 OceanSAMP Study Area

 State Waters

## Sailboat Racing Areas

 Newport Area Sailing Events

 Block Island Sailing Events



Coordinate System:  
Projection: RI Stateplane  
Units: Feet  
FIPS Zone: 3800  
Datum: NAD83

Map Base Data:  
State Borders: RIGIS; MAGIS; CTGIS  
SAMP Study Area: RI SAMP Database  
State Waters: MMS SLA Boundary  
Bathymetry: Interpolated from NOS Soundings

For Project Background Information:  
<http://seagrant.gso.uri.edu/oceansamp>

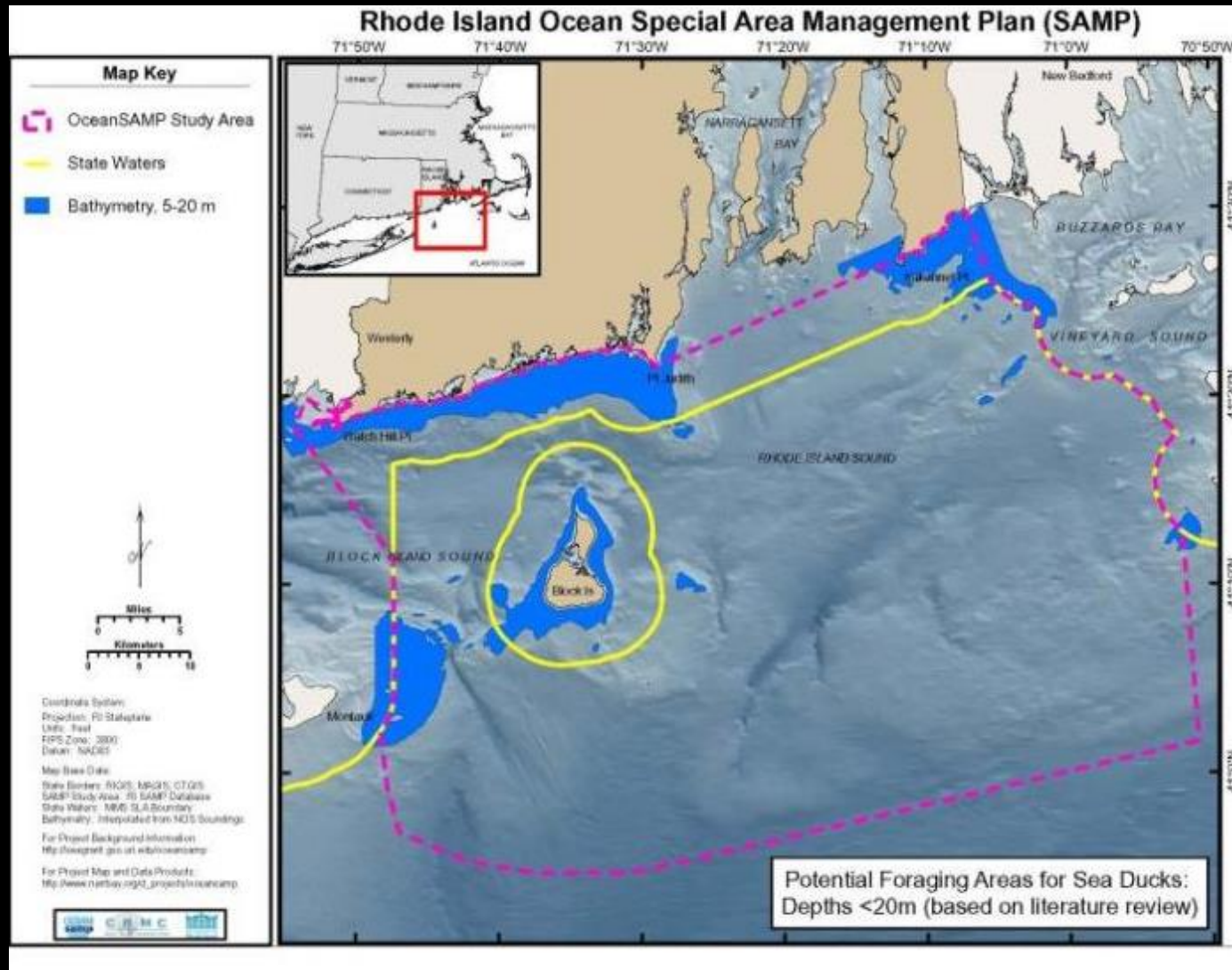
For Project Map and Data Products:  
[http://www.narrbay.org/id\\_projects/oceansamp](http://www.narrbay.org/id_projects/oceansamp)

## Sailboat Racing Areas

Source: Race Sailing Instructions, U.S. Coast Guard Marine Event Permits, and Stakeholder Input, 2009

# Areas Designated for Preservation

Increased protection for 68% of state waters and 54% of study area



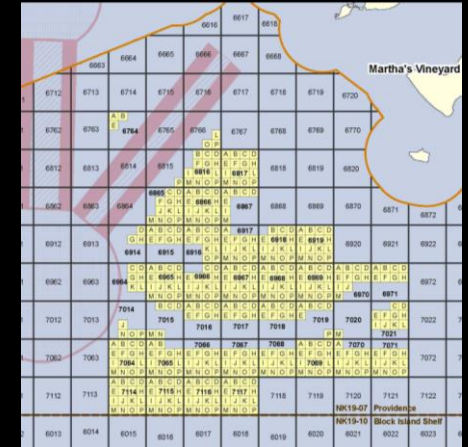


# Ocean SAMP Tools in Implementation

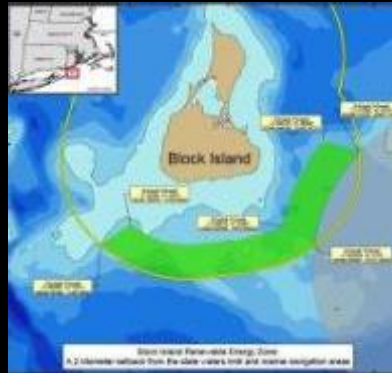
## Fishermen's Advisory Board



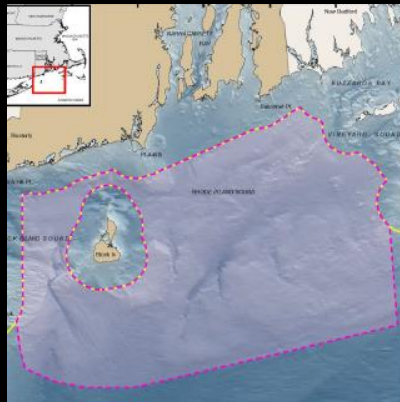
## Area of Mutual Interest



## Renewable Energy Zone



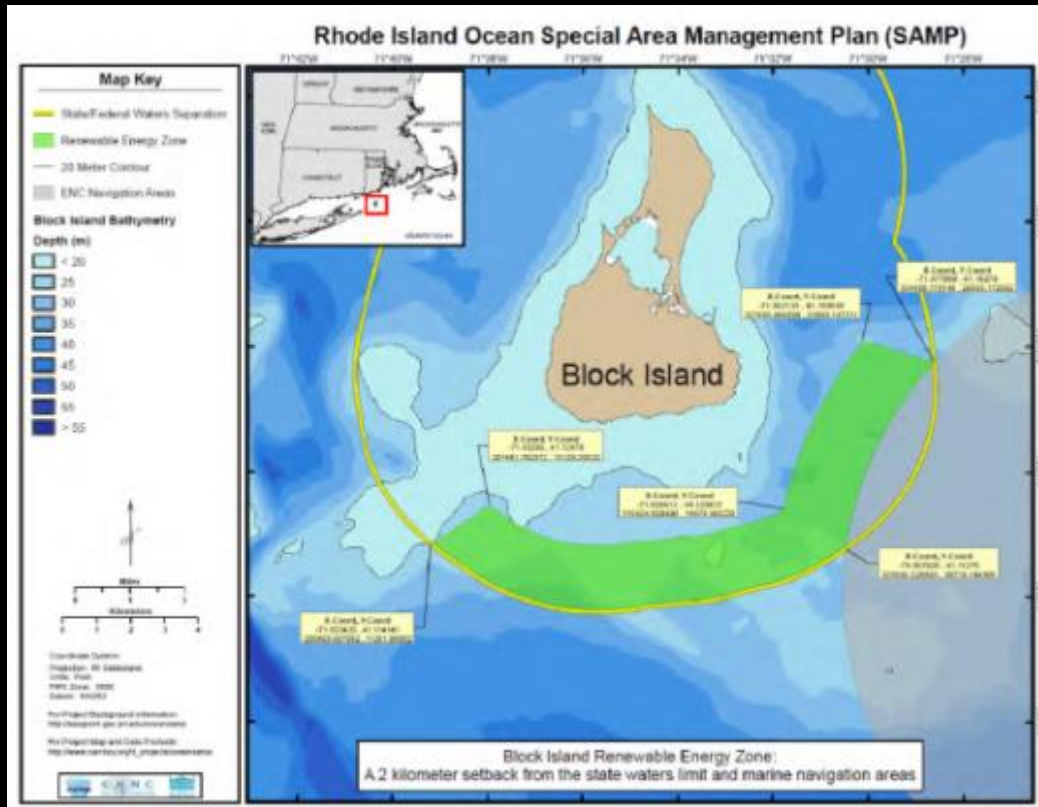
## Geographic Location Description



## Habitat Advisory Board



# Applying SAMP designations and regulatory standards: the Renewable Energy Zone



“avoided a train wreck” – Ken Payne

“Please, yes, do develop the Deepwater Wind project in what is literally my back yard” - Judith Gray, stakeholder

“In all, Deepwater Wind will invest over a quarter of a billion dollars on the wind farm and transmission system – one of the largest private investments in Rhode Island history” (Deepwater wind 2014)



# Other Means of Implementation

- U.S. Coast Guard:  
Ocean SAMP as the  
“**touchstone  
document**” —  
means of resolving  
conflict between  
agencies,  
stakeholders and  
project proponents





# NORTHEAST OCEAN DATA

Maps and data for ocean planning in the northeastern United States

HOME

MAPS ▾

DATA ▾

ABOUT ▾



← TURTLES OTHER MARINE LIFE WATER QUALITY DATA EXPLORER MARINE TRANSPORTATION ENERGY & INFRASTRUCTURE RECREATION COMMERCIAL FISHING →

Navigation

Commercial Traffic

Zoom to ▾

Basemaps ▾

Share

Print

## LEGEND

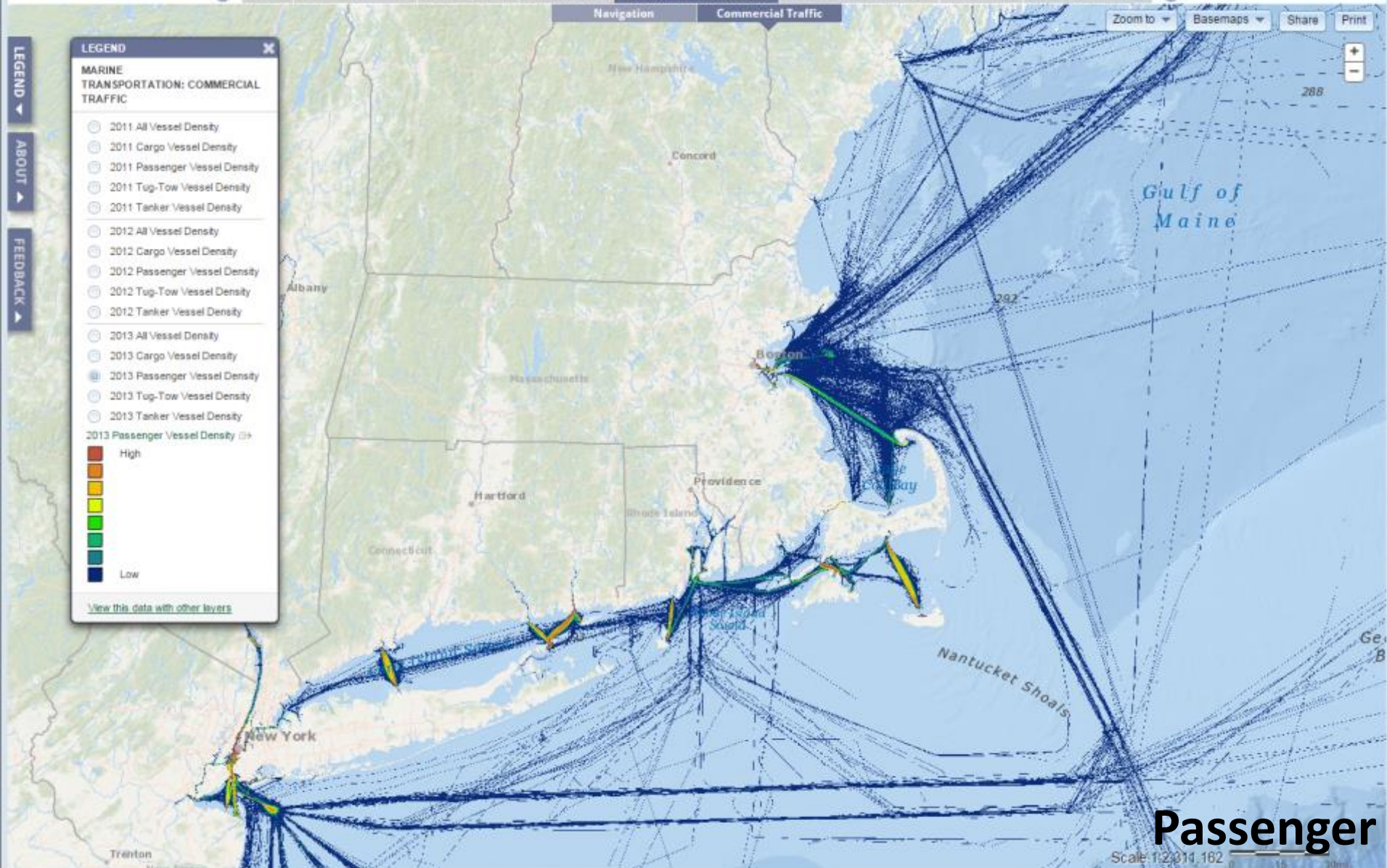
### MARINE TRANSPORTATION: COMMERCIAL TRAFFIC

- 2011 All Vessel Density
- 2011 Cargo Vessel Density
- 2011 Passenger Vessel Density
- 2011 Tug-Tow Vessel Density
- 2011 Tanker Vessel Density
- 2012 All Vessel Density
- 2012 Cargo Vessel Density
- 2012 Passenger Vessel Density
- 2012 Tug-Tow Vessel Density
- 2012 Tanker Vessel Density
- 2013 All Vessel Density
- 2013 Cargo Vessel Density
- 2013 Passenger Vessel Density
- 2013 Tug-Tow Vessel Density
- 2013 Tanker Vessel Density

2013 Passenger Vessel Density ⇄



[View this data with other layers](#)



Passenger

Scale 1:2014,162

# Thank you!



**Jennifer McCann**  
**URI Coastal Resources Center**  
<http://seagrass.gso.uri.edu/oceansamp/>



# Northeast Ocean Planning And Offshore Wind


**Robert LaBelle, DOI/BOEM**

October 20, 2016 Webinar



NORTHEAST OCEAN PLAN

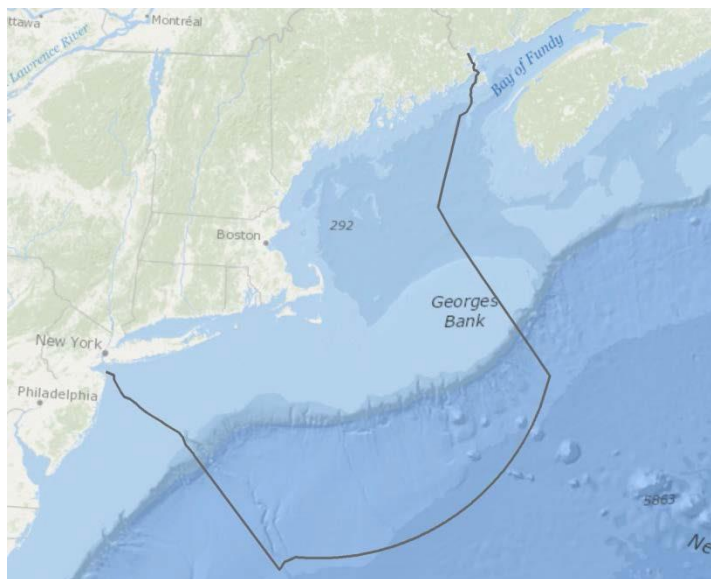


An underwater photograph showing large, green, leafy seaweed or kelp. Sunlight filters through the water from the upper right, creating bright, shimmering patterns and illuminating the scene. The seaweed is in the foreground, with its long, wavy blades extending towards the viewer. The background is a deep blue, slightly hazy water.

**How was the  
Northeast  
Ocean Plan  
developed?**

# Northeast Regional Planning Body

- Six New England states
- Six federally-recognized tribes
- Nine federal agencies
- New England Fishery Management Council
- Two ex-officio members: NY and Canada



# Outreach and Engagement

---

## **Regional Stakeholder forums + workshops**

3–6 weeks before each  
RPB meeting

Focus on upcoming RPB  
decisions

---

## **State public meetings + advisory groups**

Interactive and informal  
throughout New England

---

## **Subject specific projects + targeted outreach + work groups**

Cumulatively reached  
thousands of people across  
many issue areas

Expert/scientific review of  
methods, products

---

## **Website + social media + eblasts**

Calendar and RPB updates

Project reports, meeting  
summaries, other products

---

## **Existing meetings + events**

Leveraged existing  
opportunities to reach  
stakeholders

Various topics, throughout  
New England



## Northeast Ocean Plan goals

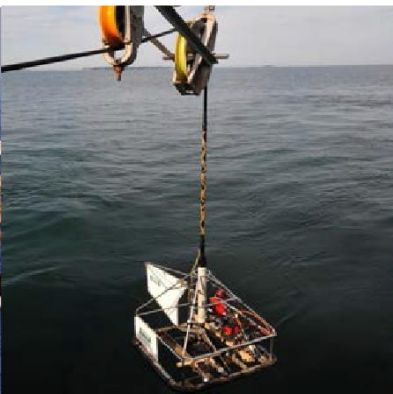
1. Healthy ocean and coastal ecosystems
2. Effective decision-making
3. Compatibility among past, current and future ocean uses

# What does the Northeast Ocean Plan do?



# What Does the Northeast Ocean Plan Do?

- Provides unprecedented amount of ocean information
- Commits federal agencies to use information in their decisions
- Helps identify conflicts and compatibility on the water
- Encourages government to work better together and engage ocean users
- Identifies future priority science and research needs





# Northeast Ocean Data Portal



NORTHEAST **OCEANPLAN**

## NORTHEAST OCEAN DATA

Maps and data for ocean planning in the northeastern United States

[HOME](#)

[MAPS](#) ▾

[DATA](#) ▾

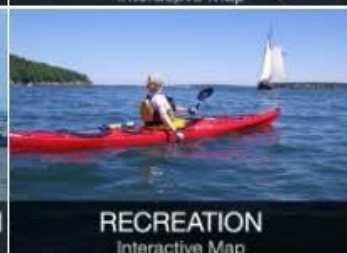
[ABOUT](#) ▾



### DATA EXPLORER

Interact with any combination of data in the Data Explorer — Human Activities, Marine Life, and Environment

#### Human Activities



#### Marine Life



#### Environment





# Ocean Resources and Activities



MARINE LIFE  
& HABITAT



NATIONAL  
SECURITY



AQUACULTURE



RESTORATION



COMMERCIAL &  
RECREATIONAL  
FISHING



OFFSHORE SAND  
RESOURCES



CULTURAL  
RESOURCES



RECREATION



MARINE  
TRANSPORTATION



ENERGY &  
INFRASTRUCTURE





NORTHEAST **OCEANPAN**



## ENERGY AND INFRASTRUCTURE



# Agency Actions:

## Energy and Infrastructure

### ***Maintain and Update Data***

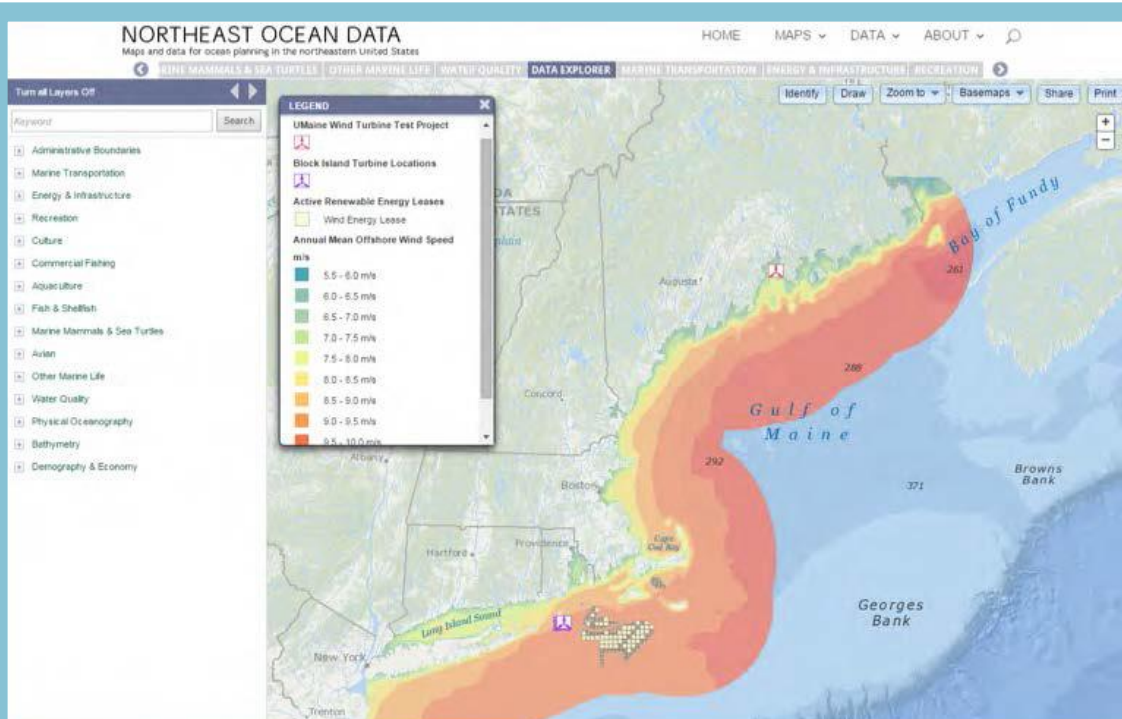
- Maintain and provide data on existing infrastructure and renewable energy planning areas (BOEM, States)
- Provide additional regional data related to energy and infrastructure permitting when available (BOEM, DOE)

### ***Inform Regulatory and Management Decisions***

- Inform commercial leasing for offshore renewable energy development
- Incorporate Plan maps and data into environmental reviews
- Identify and notify potentially affected stakeholders and improve outreach
- Ensure the Plan and Portal are used by agencies and project proponents
- Inform research and development

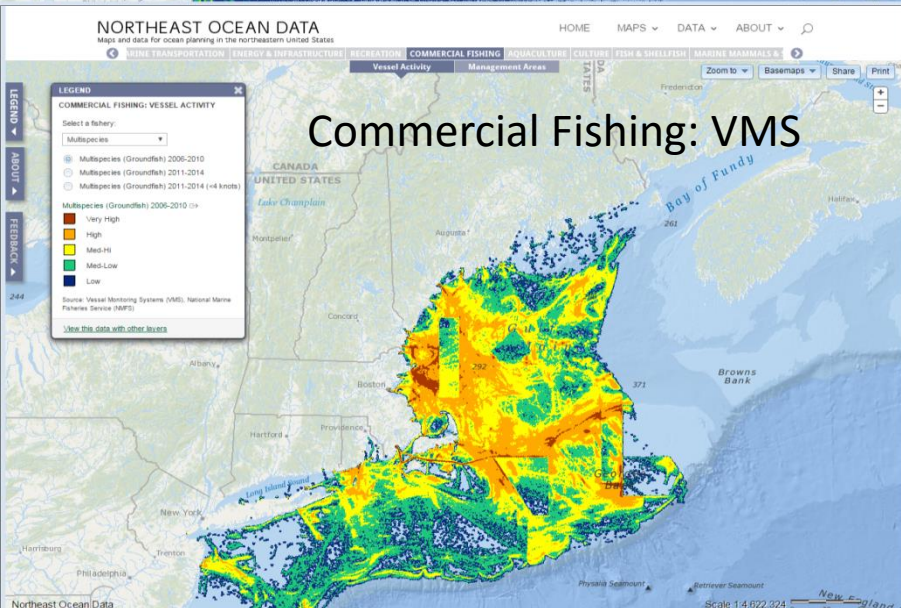
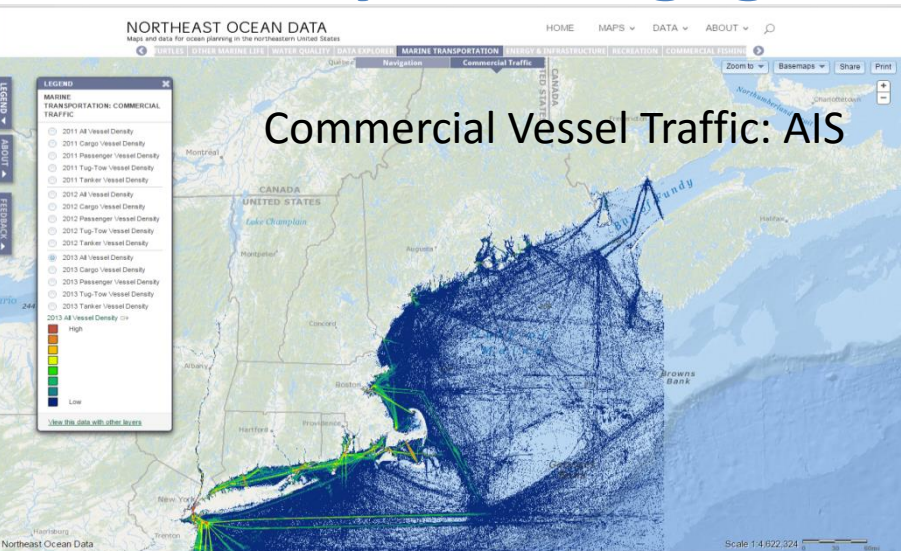
### ***Enhance Agency Coordination***

Wind resources in the Northeast U.S.  
from a 2010 DOE study



Renewable energy planning areas

# Identify and Engage Affected Users

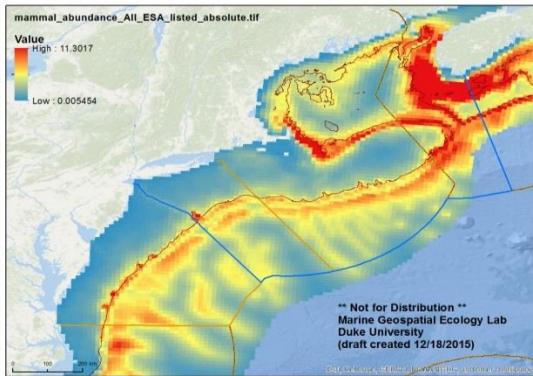


The Portal helps identify important user groups, such as commercial and recreational fishermen, commercial transportation, and the military, who are most likely to interact with new offshore energy developments and therefore should be engaged in the commercial leasing process

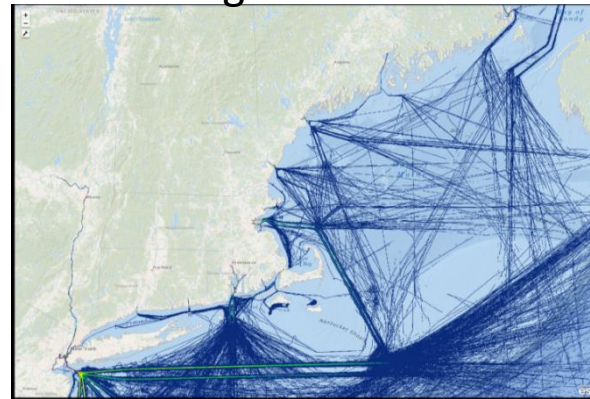


# Consider Regional Context for Energy and Infrastructure: marine life, habitat areas, cultural resources, transportation, fishing, other human uses

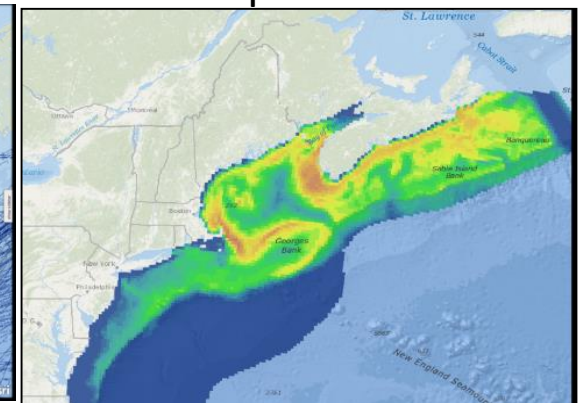
ESA listed whales



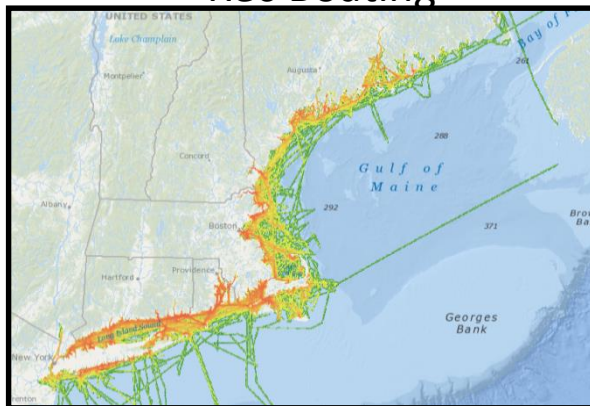
Cargo Vessels



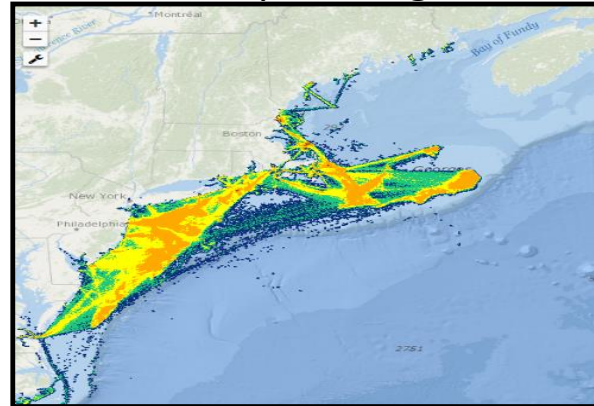
Humpbacks



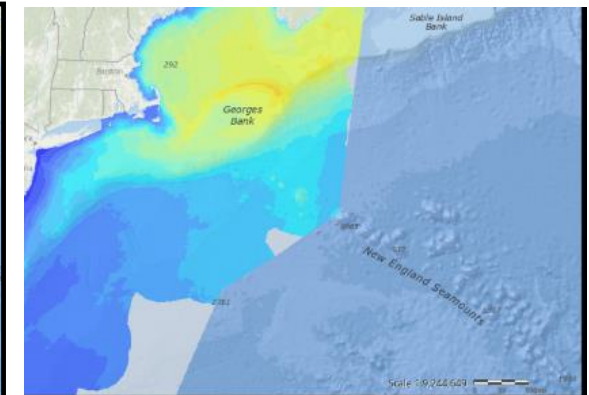
Rec Boating



Scallop Fishing



Shearwaters





ENERGY &  
INFRASTRUCTURE

# OVERVIEW ACTIONS

- EI-1 Maintain existing maps and data on the Portal
- EI-2 Provide additional regional data related to energy and infrastructure permitting when available
- EI-3 Inform commercial leasing for offshore renewable energy development



ENERGY &  
INFRASTRUCTURE



NORTHEAST OCEANPLAN

# OVERVIEW ACTIONS

- EI-4 Incorporate Plan maps and data into environmental reviews associated with new offshore energy or submarine cable proposals
- EI-5 Identify and notify potentially affected stakeholders
- EI-6 Improve outreach to industry and stakeholders related to renewable energy development
- EI-7 Ensure the plan and portal are used by agencies and project proponents
- EI-8 Inform research and development
- EI-9 Enhance intergovernmental coordination related to offshore energy development



# Real-time Opportunity for Development Environmental Observations (RODEO)



- Collect **real-time measurements** of the construction and operation activities from the **first facilities to be built**
- Allows for more accurate assessments of **actual environmental effects** and informs development of appropriate mitigation measures



Collecting sound measurements at Block Island Wind Farm, *September 2015*

# National Offshore Wind Strategy



## NATIONAL OFFSHORE WIND STRATEGY

Facilitating the Development  
of the Offshore Wind Industry  
in the United States



- Collaboratively developed by the **Departments of Energy and the Interior** in September 2016
- **Strategic themes:** reducing technology costs and risks; supporting effective stewardship; improving understanding of the benefits of offshore wind
- **DOI action areas include:** ensuring efficiency, consistency, and clarity in the regulatory process; and managing key environmental and human use concerns
  - DOI to provide specific deadlines to enhance its processes and increase transparency and certainty for the regulated community and stakeholders
  - DOE and DOI will continue to support efforts to collect, synthesize, and disseminate data to validate the impacts of offshore wind

[www.energy.gov/eere/wind/downloads/national-offshore-wind-strategy-facilitating-development-offshore-wind-industry](http://www.energy.gov/eere/wind/downloads/national-offshore-wind-strategy-facilitating-development-offshore-wind-industry)

# Northeast Ocean Plan

- The Northeast Ocean Plan was submitted to the National Ocean Council in October 2016 for certification
- **The Northeast Ocean Plan:** <http://neooceanplanning.org/>
- **Northeast Ocean Data Portal:** <http://www.northeastoceandata.org/>



# Thank you for attending our webinar

Val Stori  
Clean Energy Group/  
Northeast Wind Resource Center  
[val@cleanegroup.org](mailto:val@cleanegroup.org)

Northeast Wind Resource Center: [www.northeastwindcenter.org](http://www.northeastwindcenter.org)

DOE Wind Exchange: <http://energy.gov/eere/wind/windexchange>